



**North East England  
Launchpad  
Digital Technologies**

# **New Innovators May 24 Breakout Room**



Innovate  
UK

# Launchpad: digital technologies, North East England – New Innovators Q&A

Lee Viney, Regional Manager, Innovate UK

Shelley Armstrong, Head of Communications and Engagement, Innovation SuperNetwork

Richard Foggie, Knowledge Transfer Manager for Digital Economy and IoT, IUK Business Connect

# *Projects we want to fund*

The aim of this competition is to provide a package of targeted support to enable ambitious UK registered micro and small businesses to develop highly innovative ideas that have a clear route to commercialisation and business growth

- Your project must use the funding to help grow your innovation activities in the digital technology cluster in North East England, both during and after the project

For this competition, North East England consists of Northumberland, Tyne and Wear, and County Durham.

- Projects must focus on digital technologies that can be applied in growing and emerging markets

# *Your project...*

**can focus on growing or emerging markets, such as:**

advanced manufacturing

green industries

agriculture and forestry

health

automotive and transportation

offshore industries

creative industries

retail and town centre

culture, tourism, leisure and sport

# Your project...

Can focus on immersive technologies:

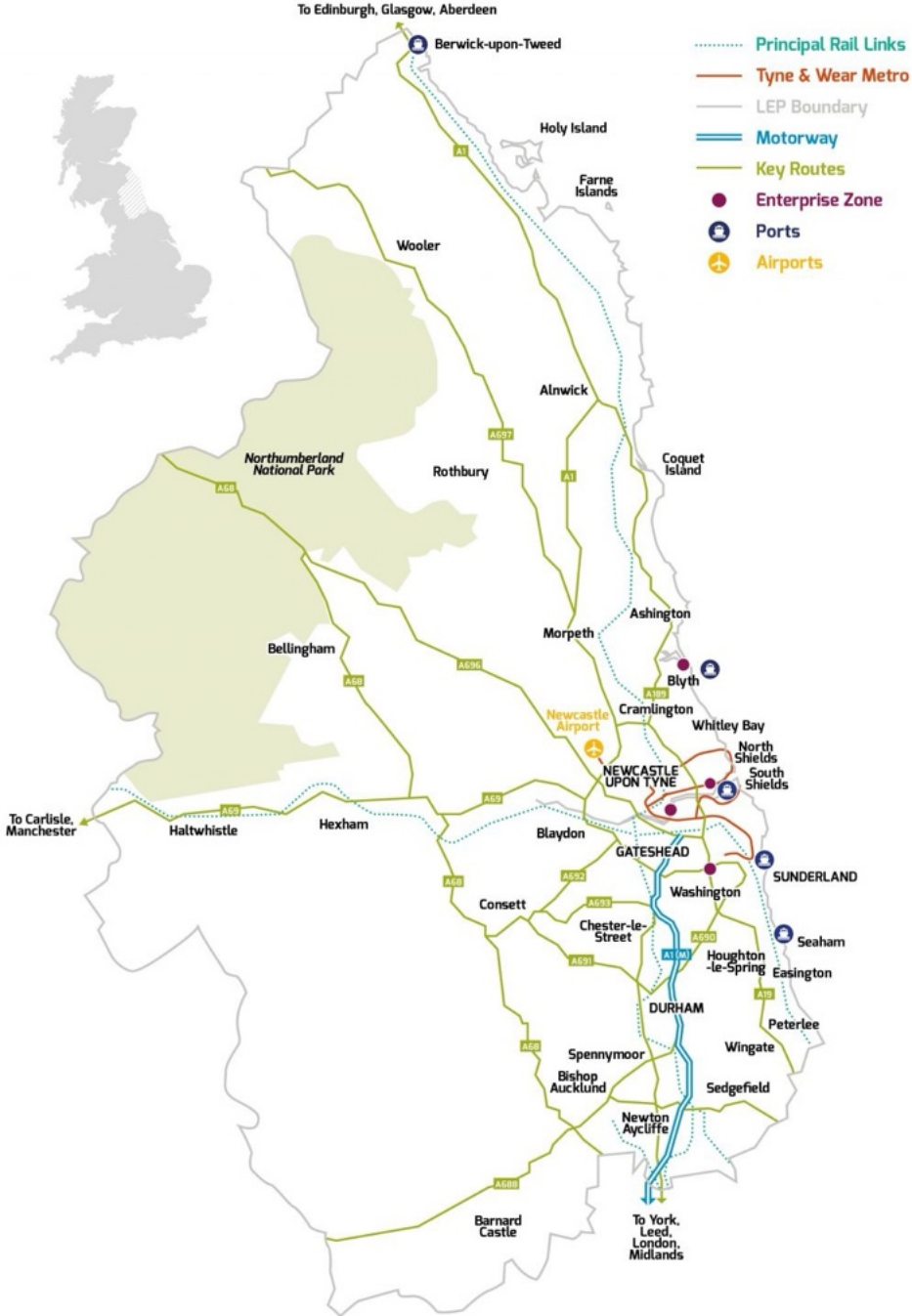
- extended reality
- digital twins
- games engines
- virtual production

Can focus on artificial intelligence:

- data science
- machine learning
- neural networks
- computer vision
- robotics
- large language models
- quantum computing

These lists are not exhaustive. Where you can show your proposal fits within the scope of this competition you can focus on other technologies or markets.

# North East



# North East

## Fast growing digital sector

- £2.1bn GVA
- 2,215 businesses
- 27,000 employees



# The fastest growing subsectors

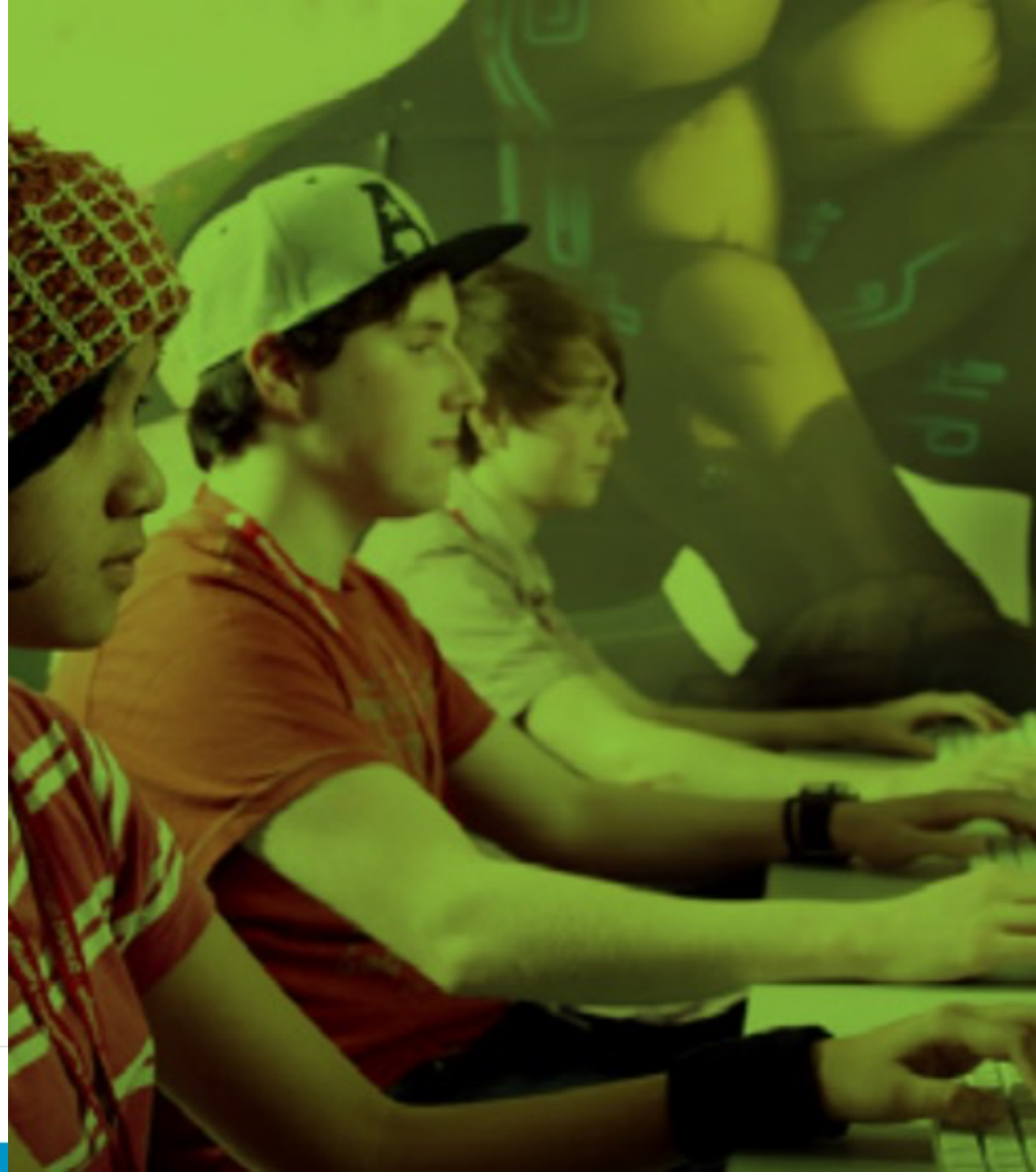
- Immersive tech
- Artificial intelligence
- Software as a Service

- 100+ businesses
- 4,320 employees
- £304mil combined t/o



## Market application examples

- Predictive simulation
- Conferring intelligence
- Education and training
- Etc.....



# A vibrant ecosystem

Digital catapult NETV  
PROTO  
Dynamo  
Innovation Super Network  
NTCA Digital investment  
Sunderland Software City  
Digital Union  
National Innovation Centre for Data

## Digital cluster support

### Market entry

NE Automotive Alliance  
NEPIC  
NE Pharma  
Bio Now  
NE Screen  
CoE Satellite Applications  
Energi Coast

DWP  
HMRC  
Sage  
Accenture  
DXC  
Newcastle Business Solutions  
P&G  
Nissan  
Siemens  
NHS

## Large organisations

### Research & Tech Orgs

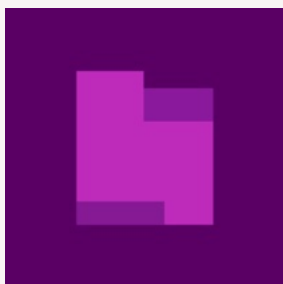
Research Computing at Durham Uni  
Northumbria Uni BIM Academy  
Computer Science – Uni of Sunderland  
CPI Nat Biologics Manu Centre  
Offshore Renewable Energy Catapult  
NE Battery Alliance  
Energy Systems Catapult  
National Centre for Aging  
Centre for Life  
Academic Health Science Network

# Contact

## Customer Support Services

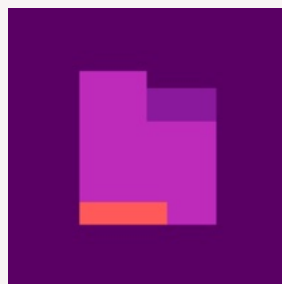
0300 321 4357 (Monday - Friday 9am – 12pm and 2pm – 5pm)

[support@iuk.ukri.org](mailto:support@iuk.ukri.org)



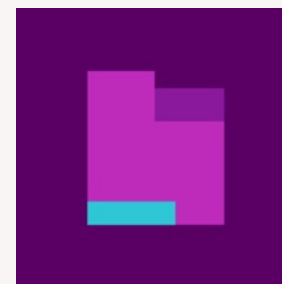
**Innovate UK**

[ukri.org/councils/innovate-uk](https://ukri.org/councils/innovate-uk)



**Innovate UK  
Business Connect**

[iuk.ktn-uk.org](https://iuk.ktn-uk.org)



**Innovate UK  
Business Growth**

[innovateukedge.ukri.org](https://innovateukedge.ukri.org)

# Work Packages

<b>Inspire and Connect</b>	<p>Full sector focus, with specific activities in areas incl:</p> <ul style="list-style-type: none"> <li>• Health &amp; MedTech / Life Sciences</li> <li>• Net Zero / Renewables</li> <li>• Advanced Manufacturing</li> <li>• Creative</li> <li>• Space</li> <li>• Professional services (incl: EdTech &amp; FinTech)</li> <li>• Dat &amp; AI</li> <li>• Immersive as a cross-cutting theme.</li> </ul>	<p>Building Collaborative platforms to encourage innovation partnerships between stakeholders and local businesses.</p> <p>Engage with 1000 businesses through events</p>
<b>Challenge and Innovate</b>	<p>Three collaborative partnerships / challenges working with stakeholders and supply chain in identified sector areas</p>	<p>One-to-one support to 100 businesses / 50 new jobs</p>
<b>Finance</b>	<p>Investment readiness programme leveraging opportunities via Investment Ecosystem locally and utilising Northern Investor Hub &amp; programmes like Pathways to Funding.</p>	<p>Minimum £20m raised by supported businesses (contributing towards regional £450m)</p>
<b>Diversity &amp; Inclusion</b>	<p>Dedicated EDI strand, working with stakeholders incl: Women in Tech NE</p>	<p>Increased participation (baseline TBD)</p>
<b>Communicate</b>	<p>Supporting governance of the model and ensuring multi-stakeholder collaboration is effective, leveraging opportunities for the Launchpad and local businesses.</p>	<p>Cluster network map and road map</p>
<b>Evaluate and Manage</b>	<p>Research &amp; evaluation milestones October 2024, May 2025 and December 2025 – feeding insights into programme delivery building on opportunities and reacting to challenges.</p>	<p>Launchpad embedded into future strategy for region</p>

# Contacts

**Shelley Armstrong**

Head of Communications & Engagement  
(Digital Launchpad Programme Manager)

[shelley@supernetwork.org.uk](mailto:shelley@supernetwork.org.uk)

