

Innovate UK Analysis for Innovators Round 12, Stage 1 Expression of Interest briefing

How to apply and next steps

13 November 2023
Simon Yarwood – A4I@iuk.ktn-uk.org

www.ktn-uk.org



Agenda

Introduction and role of KTN – Simon Yarwood, Innovate UK KTN

Background and applications – Bobby Agwu, Innovate UK

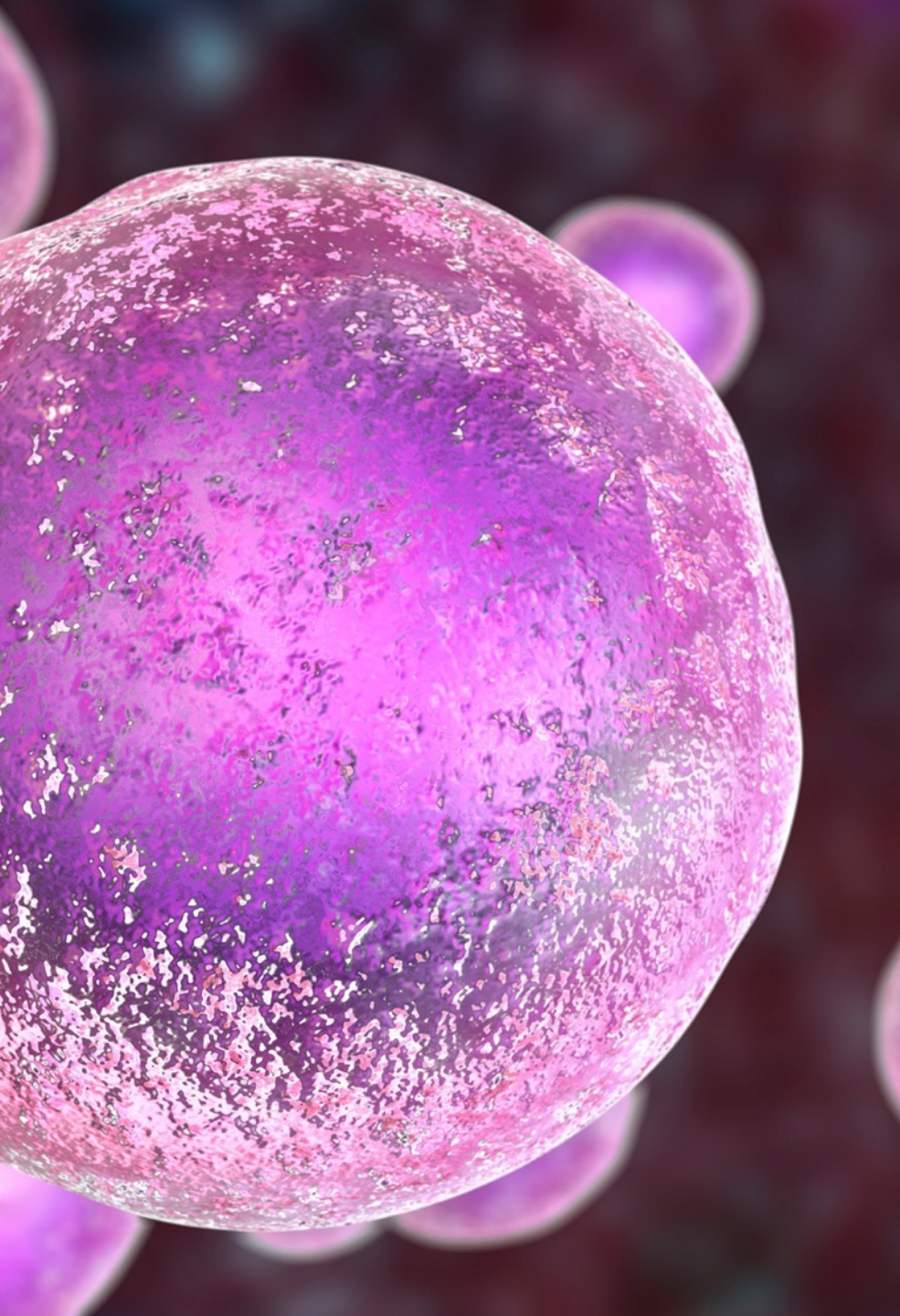
Role of Partners – Hayley Pennetta, National Measurement Laboratory at LGC

Q&A – delegates and presenters



About Us

Innovate UK KTN exists to connect innovators with new partners and new opportunities beyond their existing thinking – accelerating ambitious ideas into real-world solutions.



Cross-Sector Expertise

Agrifood

Biotechnology

Chemistry

Creative Industries

Computing

Design

Digital

Electronics

Energy

Geospatial

Health

Industrial Maths

Infrastructure

Manufacturing

Materials

Photonics

Quantum

Robotics & AI

Security & Defence

Sensors

Space

Transport

Water

(net) Zero



InnovateUK
KTN

Innovate UK KTN

- We are not quite the same thing.
- We support innovators to deliver their next idea and connect for positive change.
- What? Well its PPP,
 - People
 - Products
 - Pounds

Role of Innovate UK KTN, in Innovate UK Analysis for Innovators

- We organise the brokerage meetings, where partners express an interest in meeting companies based on their EoI.
- You could be asked to meet with MORE than one partner, they will always be done in separate meetings. So you will be asked to vote on your availability in separate Doodle polls for EACH virtual meeting. We can't do this if your contact info, email and mobile number, aren't correct on the application and in IFS.
- We organize the briefing events for stages 1 and 2.
- We offer advice on the application process if you reach stage 2
- We can offer light touch feedback on an application at stage 2.
- We can be asked questions via – A4I@iuk.ktn-uk.org

Important dates after your Stage 1 submission

- **Brokerage scheduling – 22nd January to 2nd February 2024**
 - be available to add your availability to doodle polls so meetings can be arranged. There might be MORE THAN ONE meeting as multiple partners might want to meet you, EACH ONE needs a vote on availability, don't double book yourself please!
- **Brokerage virtual meetings – 5th February to 20th February**
 - be available to attend ALL the virtual brokerage meeting(s) you've had arranged for you.
- **Brokerage feedback – 21st February to 26th February**
 - a post brokerage survey will be sent out, we need this answered quickly and answered for EACH brokerage meeting attended, so we can match up who wants to progress to stage 2.
- If you are not available in those time periods, please do NOT apply as a company, or if you are a specialist/scientist at a Partner, please do NOT express an interest in participating.
- Availability issues and associated delays are the biggest challenge in the Stage 1 process, so please do consider these when looking to apply.