

Monitoring Deforestation Risk in East African Green Coffee Supply Chains

Robin Sampson

Managing Director
Trade In Space

Mona Philippon

Green Coffee Merchant
Sucafina N.V.



tradeinspace

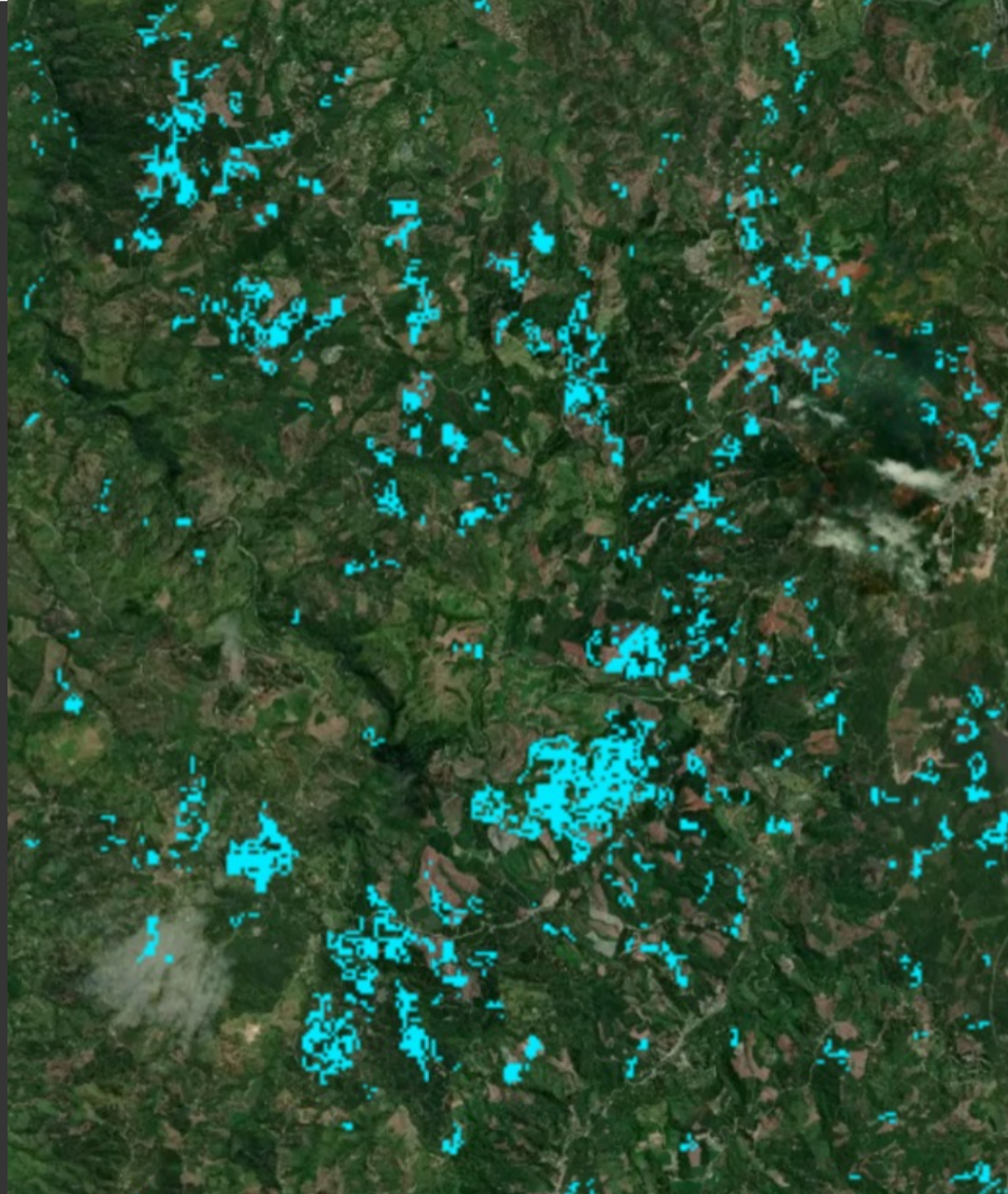


SUCAFINA

User Perspectives:

Monitoring Deforestation Risk in East African Green Coffee Supply Chains

**Mona Philippon (Sucafina),
Introduced by Robin Sampson (Trade in Space).**



ABOUT SUCAFINA



Sucafina is the leading sustainable Farm to Roaster coffee company, with a family tradition in commodities that stretches back to 1905. Today, with more than 1,400 employees in 34 countries, we help stakeholders worldwide to find the perfect coffee solutions. We embed technology, innovation, and sustainability throughout the supply chain, creating shared value for all by Investing in Farmers, Caring for People, and Protecting Our Planet.



DEFORESTATION

Understanding the Issue



IPCC estimates that 23% of total GHG emissions (2007-2016) come from agriculture, forestry and other land uses.



~11% of overall emissions are from forestry and other land use, mostly deforestation.

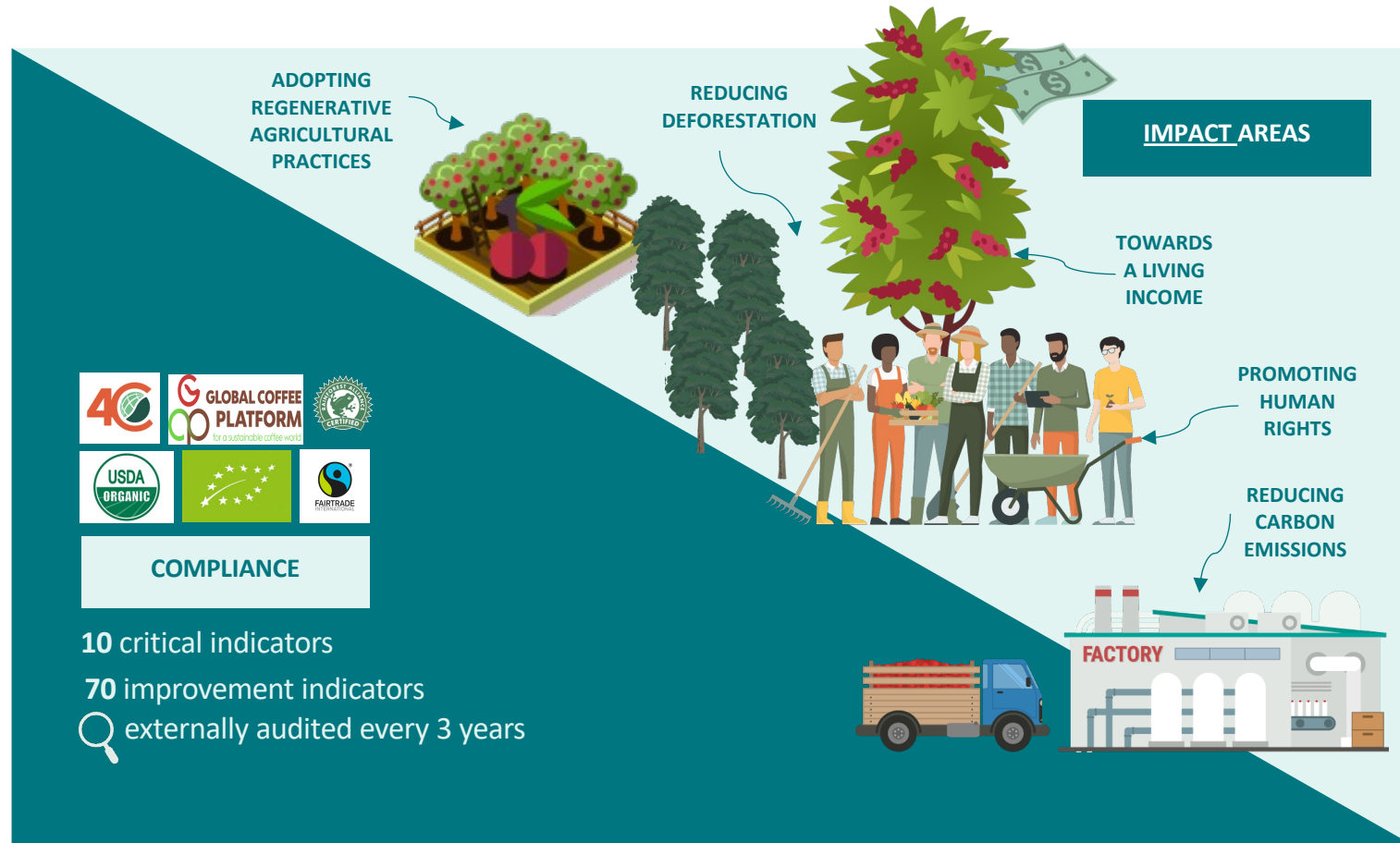


Remaining 12% are direct emissions from agricultural production such as livestock and fertilizers.



IMPACT CERTIFICATION

Benefitting Farmers, Traders & Roasters



OUR APPROACH

Tackling Deforestation as Part of IMPACT Responsible Sourcing



1. Map our supply chains (traceability for farm)



2. Conduct Deforestation Risk Assessment



3. Mitigate Deforestation & Forest Degradation Risks



1. MAP OUR SUPPLY CHAINS

Traceability Back to Farm is Fundamental for Assessing Deforestation Risks



SUCAFINA

Total number of registered Farmers: **81,559**

Number of coffee farm plots: **85,015**

12.8%

10,369

Country: Burundi

Region: All

District: All

Coffee Washing Station: All

Coffee type: All

Certification: All

Cooperatives: All

Assigned Field Officer: All

Register Plot

Please enter plot name* **2**

Plot A

Please select crop type **3**

Coffee - Arabica Coffee

Area (hectare)*

0.645

Country*

Burundi

State/Province*

GATARA-KAYANZA

District*

KABABAJI-MBIRIZI

Tags

Plantation Age (in Years)

10

Plantation Date

07/11/2012

Pruning Date

Link Tag



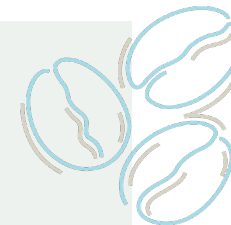
- Using digital tools (Cropin) to GPS map farmers; ensuring first-mile traceability
- Over 150,000 farmers mapped

2. DEFORESTATION RISK ASSESSMENT

Assessing Risks of Deforestation using Trade In Space



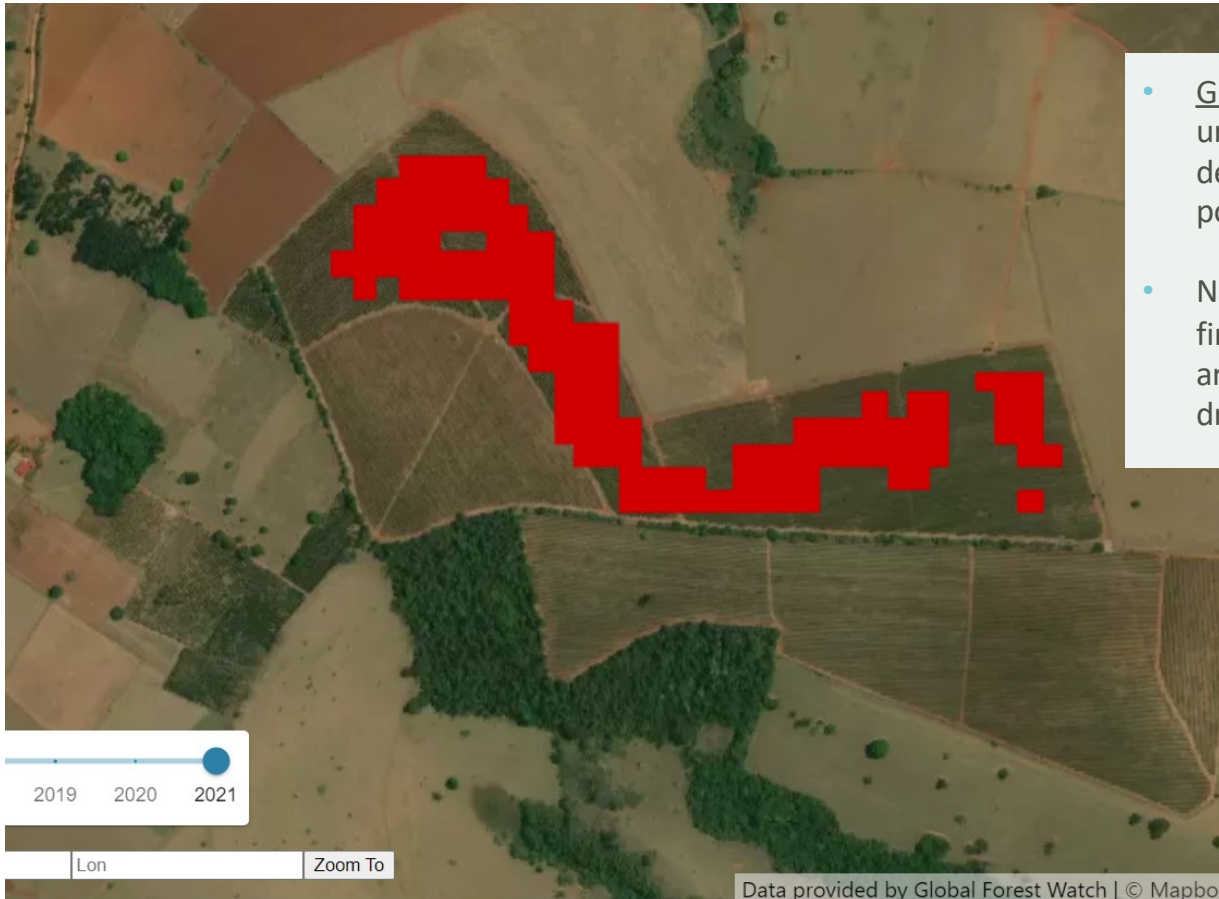
- Designed by Trade in Space and Sucafina for coffee
- Using Global Forest Watch Pro datasets to assess deforestation risks
- Over 150,000 farmers mapped
- EU compliant



2. CONDUCT DEFORESTATION RISK ASSESSMENT



Ground assessment is crucial to understand the root-causes



- Ground assessments are crucial to understanding the causes of deforestation and identifying potential mitigating actions.
- Natural causes such as wild-fires, urbanization, regeneration are not attributed as commodity-driven deforestation.

Satellite image analysis can show normal agricultural practices as deforestation

3. MITIGATE DEFORESTATION & FOREST DEGRADATION RISKS



RAISING AWARENESS

- Education & awareness raising are critical to preventing deforestation

PROMOTING GOOD AGRICULTURAL PRACTICES (GAPS)

- Ensure efficient and environmentally sound farming
- Increase productivity & profitability of existing land without encroaching into forests

DEVELOPING AGROFORESTRY MODELS

- Intercropping coffee with other trees on the same land
- Increase carbon storage, biodiversity, and nutrient cycling
- Lower air temperatures and higher soil moisture
- Provide alternative farmer income



CASE – UGANDA: PROMOTING AGROFORESTRY

Supporting Farmers in Regenerative Agriculture



OBJECTIVES

- Accelerate the transition of the coffee value chain towards regenerative agricultural practices by promoting agroforestry, low-carbon farming methods & building living income

IMPACTS

- Provided 2,500 farmers with training on agroforestry practices, gender & farming as a business
- Planted 30,000 trees & setup 10 demonstration gardens to showcase best practices & trial innovative approaches to farming
- Distribute organic fertilizer to select farmers



PARTNERS: Partnerships for Forests (P4F)

