

Critical Materials for Magnets Competition Briefing

www.ktn-uk.org



InnovateUK
KTN



Housekeeping

- You will be muted throughout the webinar
- Please use the 'Chat' box to introduce yourself
- Please use the Q&A box to ask questions
- The webinar will be recorded, and you will be sent the link, along with other information, shortly after the webinar



Agenda

Title	Speaker
Welcome and Housekeeping	Sheena Hindocha
KTN Introduction	Steve Morris
Circular Critical Minerals Supply Chains Programme Overview	Martyn Cherrington
Critical Minerals for Magnets Competition Scope	Martyn Cherrington
How to apply	Dawn Manser
Q&A	Chair: Sheena Hindocha

Innovate UK KTN

About Us

Sheena Hindocha – KTM Materials Chemistry
Steve Morris – KTM Smart Materials & Technical Textiles

www.ktn-uk.org



Innovate UK
KTN



About Us

- Innovate UK KTN exists to connect innovators with new partners and new opportunities beyond their existing thinking - accelerating ambitious ideas into real-world solutions.
- We are part of the Innovate UK system that includes Innovate UK, Innovate UK EDGE and the Catapults.



Our Purpose and Vision

- Our purpose - We create diverse connections for positive change.
- Our vision - Together, we create networks of innovators so powerful, their ideas will change the world.

Our Values



Open

We value diversity of opinions, ideas, skills and perspectives.



Creative

We embrace ideas with curious minds and use our insight to uncover opportunity.



Collaborative

We are one team, working together across sectors, people and geographies to drive positive change.



Determined

We are determined to meet challenges with solutions and enable innovators to think and act beyond expectations.

Our Strategy

Positive Change

We create diverse connections to drive positive change

Deep Expertise

We have wide-ranging expertise and convene the expertise of others

Powerful Connections

We drive powerful connections with business at the heart of what we do

Future Shaping

We shape the innovation communities of the future

Our People

We provide an exceptional place of work for our exceptional people



InnovateUK
KTN



We connect **regional, national and global** innovation

Our **Global Alliance** programme drives international collaborations with governments, societies, enterprises, institutions and people from every corner of the globe.





Global Expert Missions

Global Expert Missions (GEMs), funded by Innovate UK and delivered by KTN, drive the sharing of expertise across borders and foster global collaboration. They help to build international strategic partnerships and provide insight into innovation opportunities for the UK.



InnovateUK
KTN



We connect **innovators, funders and collaborators** to transform ideas into solutions

KTN's **Innovation Exchange** programme connects companies with specific challenges to innovators who are already working on the solutions. Our unique cross-sector approach connects businesses with opportunities beyond their existing thinking.

Innovate UK System



Innovate UK

Innovate UK is the UK's innovation agency: a non-departmental public body operating at arm's length from the Government as part of UKRI.



Innovate UK KTN

Innovate UK KTN exists to connect innovators with new partners and new opportunities beyond their existing thinking - accelerating ambitious ideas into real-world solutions.



EDGE

Innovate UK EDGE empowers innovation-driven businesses to grow at pace and achieve their industry- and society-transforming ambitions.



InnovateUK
KTN

Our Network



46,229
Unique
Organisations



72%
Small

15%
Medium

13%
Large



234,478
innovators



Every university in
the UK

Innovate UK KTN Team

Our role

To facilitate the links with stakeholders and grow the community to identify and address the challenges facing the UK in meeting the challenge of accessing critical minerals

About us

We are a cross sector team from the enabling technologies of chemistry and materials with access to other sectoral and application expertise within Innovate UK KTN



Sheena Hindocha
KTM Materials Chemistry



Matthew Reeves
KTM Materials Chemistry & Formulation



Stephen Morris
KTM Smart Materials & Technical Textiles



Debra Jones
KTM Chemistry



Megan Phoenix
KTM Investor Communities



Aileen Woodley
Campaign Lead – Net Zero



Ellie Collins
Event Manager



Bethany Hughes
Marketing Manager

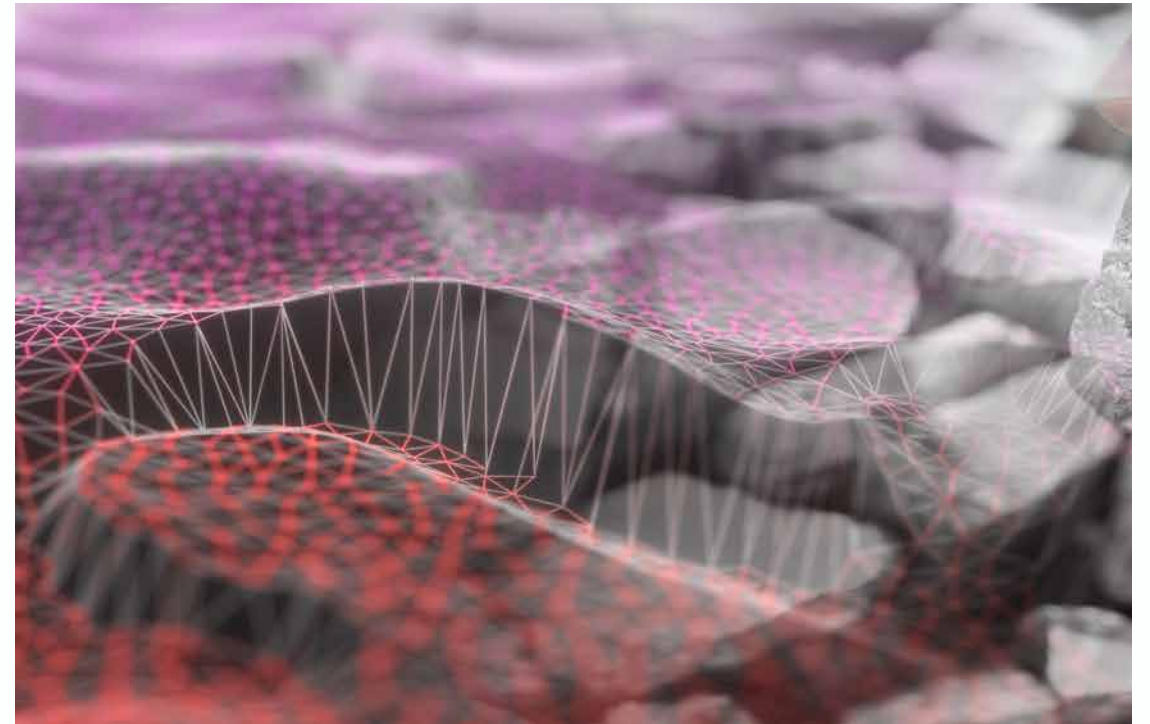


Circular Critical Materials Supply Chains Networking Event - In Person

This live event will include an opportunity to

- Learn about the UK Critical Mineral landscape
- Learn about the UK opportunity in rare earth elements
- Hear about current projects and innovation
- Highlight your project ideas with the community through pitch sessions
- Provide you with a networking opportunity
- Connect with Innovate UK KTN experts who can support you building a consortia

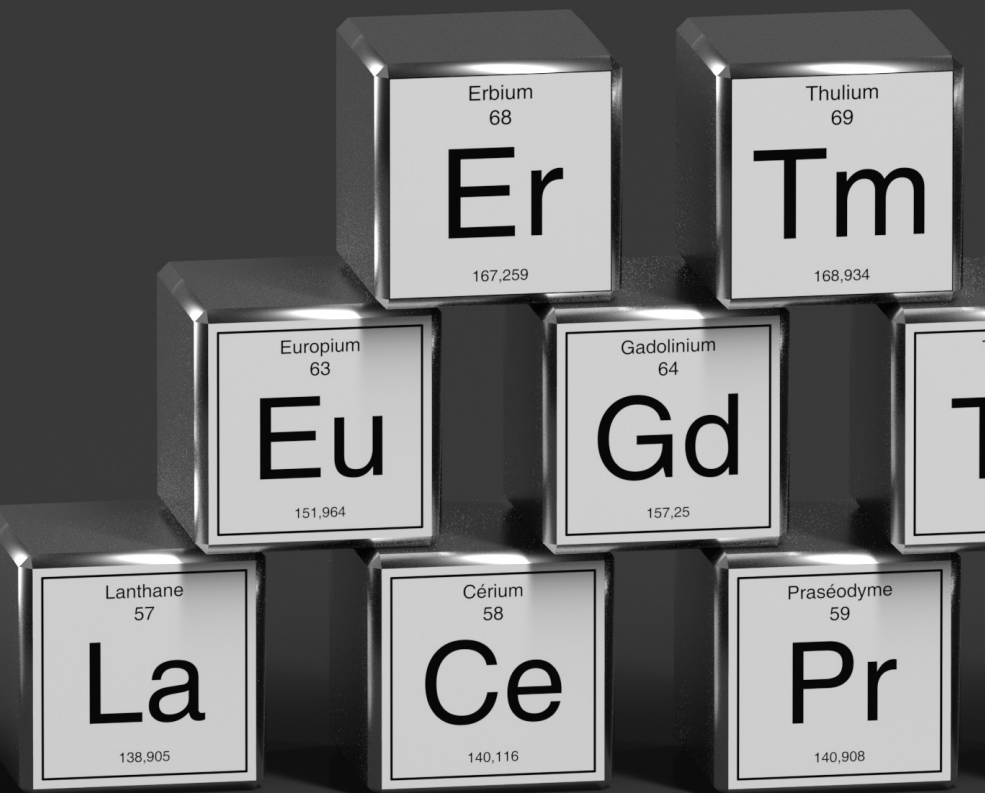
**19th April
The Studio, Birmingham**



Register here:

<https://iuk.ktn-uk.org/events/circular-critical-materials-supply-chains-networking-event-in-person/>





Call to Action

Sign up to CLIMATES mailing list

- Hear news about upcoming events, articles and activities
- <https://info.ktn-uk.org/p/2VFU-EJD/climates>

Build your consortia with Meeting Mojo

- Upload your profile, search other users' profiles to connect and network
- Online messaging and 1:1 virtual meetings
- <https://critical-climates.meeting-mojo.com/>

Connect with the team

- Connect to KTN experts to support your innovation development



Find out more

@KTNUK

Sheena.hindocha@iuk.ktn-uk.org

Stephen.morris@iuk.ktn-uk.org

www.ktn-uk.org



Innovate UK
KTN



Agenda

Title	Speaker
Welcome and Housekeeping	Sheena Hindocha
KTN Introduction	Steve Morris
Circular Critical Minerals Supply Chains Programme Overview	Martyn Cherrington
Critical Minerals for Magnets Competition Scope	Martyn Cherrington
How to apply	Dawn Manser
Q&A	Chair: Sheena Hindocha



Agenda

Title	Speaker
Welcome and Housekeeping	Sheena Hindocha
KTN Introduction	Steve Morris
Circular Critical Minerals Supply Chains Programme Overview	Martyn Cherrington
Critical Minerals for Magnets Competition Scope	Martyn Cherrington
How to apply	Dawn Manser
Q&A	Chair: Sheena Hindocha



CLIMATES: **Circular critical materials supply chains**

Programme overview



Dr Martyn Cherrington
Innovate UK



UK Research and Innovation

We work with the government to invest over £7 billion a year in research and innovation by partnering with academia and industry to make the impossible, possible. Through the UK's nine leading academic and industrial funding councils, we create **knowledge with impact.**



**UK Research
and Innovation**

Innovate UK

- We are the UK's innovation agency
- We support business-led innovation in all sectors, technologies and UK regions
- A key delivery body of the Government's Innovation Strategy

Our Mission

To help UK businesses grow through the development and commercialisation of new products, processes, and services, supported by an outstanding innovation ecosystem that is agile, inclusive, and easy to navigate.



Net Zero: Our Vision



**For the UK to prosper from being the
fastest transitioning economy to net zero**



Strategic Delivery Plan 2022-2025



We will focus new programmes on key Net Zero themes:

Power: Develop new energy vectors to fuel vehicles, heat buildings and power industry.

Mobility: Move to electrified and net zero powertrain and reduce carbon through digitisation of transport.

Heat: Move away from gas heating space and water in all buildings.

Net Zero Living: Develop new products and services that transform where we live and work into net zero places.

Make and Use: Transform industry into an advanced, resilient and responsible system.

Green Finance: Increase private investment into green businesses and support their scale-up.

Circular Critical Materials: Develop supply chain resilience in a variety of mineral raw materials.

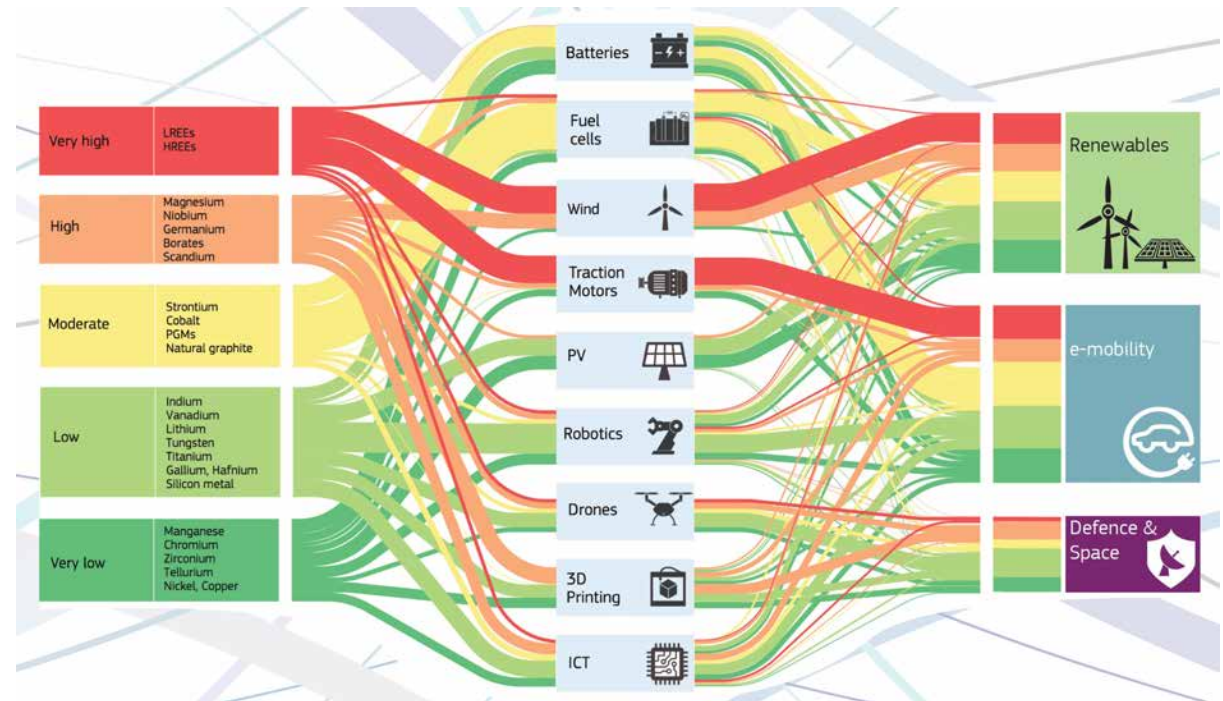


Principles

- Adaptation
- Circular Economy
- Energy Security
- Environmental Sustainability
- Just Transition
- Resilient Supply Chains

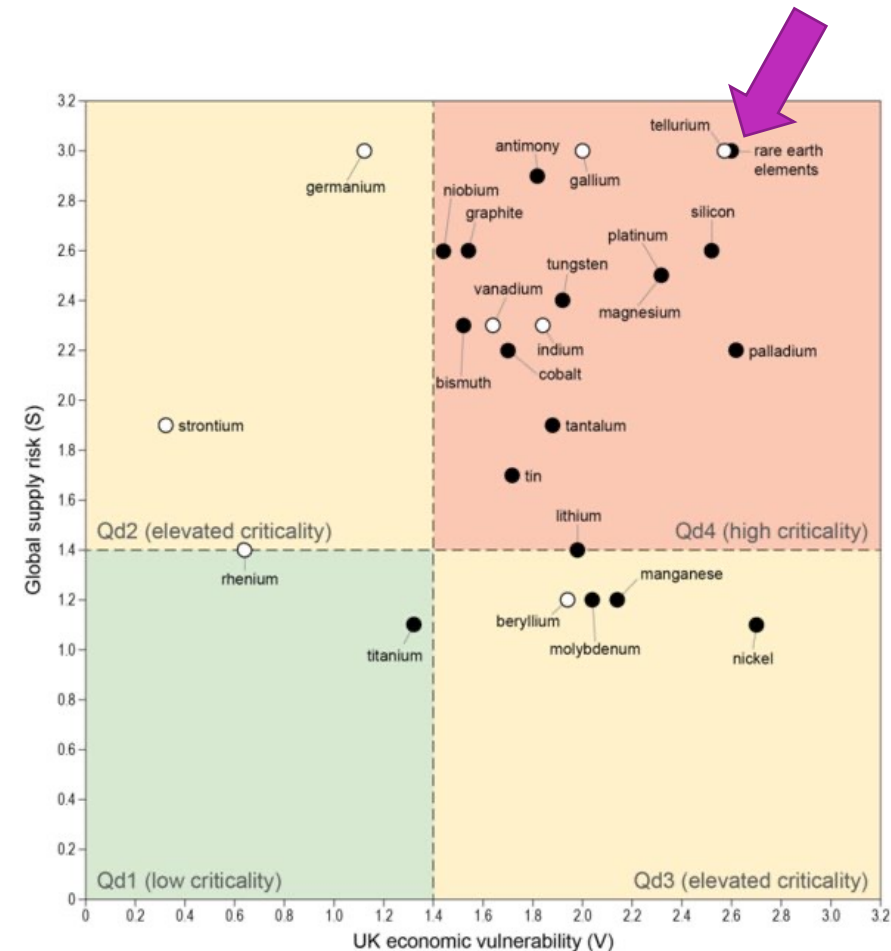
Electrification driving demand

- UK Government policy driving electrification across transport, energy and wider industry
 - *Net Zero by 2050*
 - *Phase out sale of petrol and diesel cars by 2030*
 - *50GW of offshore wind by 2030*
- Demand for critical metals increasing rapidly:
 - *BEVs require 6x metals compared to ICE*
 - *650kg/MW of magnets in an offshore wind turbine*
 - *IEA forecast up to seven-fold increase in demand for rare earth's by 2040 vs 2020*
- Security of supply and resilience of supply chains is a major challenge for critical materials



New Intervention in Critical Materials

- **CLIMATES**: Circular critical materials supply chains
- **£15 million** investment over 2 years
- Initial focus on **Rare Earth Elements**
- Activities aim to:
 - **inspire** innovation in the field
 - **involve** a wide range of stakeholders across the supply chain and
 - **invest** in innovative companies and projects



Inspire | Involve | Invest

<https://www.bgs.ac.uk/download/uk-criticality-assessment-of-technology-critical-minerals-and-metals/>

Key strategic alignment

- Supports the delivery of a wide range of objectives laid out by the UK Government in the *Resilience for the future: The UK's critical minerals strategy*
- Key strategy aims are to:
 - **Accelerate** the UK's domestic capabilities
 - **Collaborate** with international partners
 - **Enhance** international markets to make them more responsive, transparent and responsible



<https://www.gov.uk/government/publications/uk-critical-mineral-strategy/resilience-for-the-future-the-uks-critical-minerals-strategy>

Complimenting and building on existing activities



Natural
Environment
Research Council



Engineering and
Physical Sciences
Research Council



Economic
and Social
Research Council



Biotechnology and
Biological Sciences
Research Council



British
Geological
Survey



UK Critical Minerals
Intelligence Centre

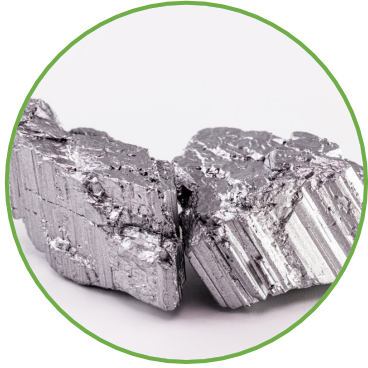


Interdisciplinary Centre
for Technology Metals
Economy



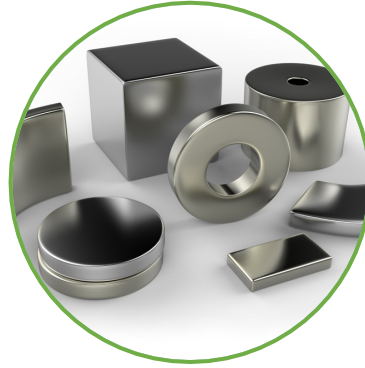
Driving the
Electric Revolution
Industrialisation Centres

Programme focus



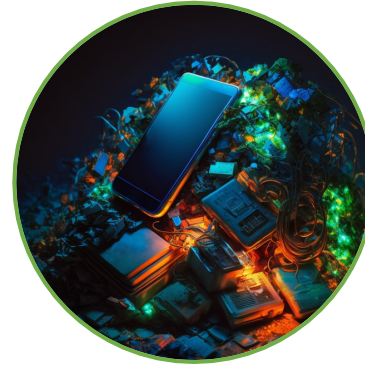
Extraction and Processing

Novel and sustainable mining & up-stream processes, sustainable mid-stream processes, sustainable routes to rare earth alloys



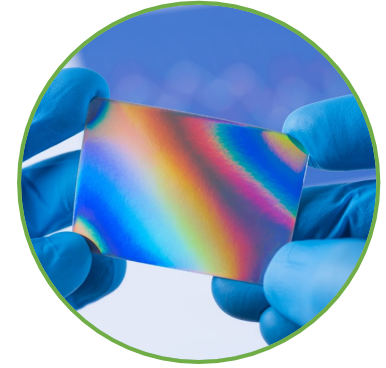
Magnet Manufacture

Sustainable manufacturing routes to high performance magnets, increased specification of high-performance magnets



Circular Economy

Collection and sorting of REE containing products, sustainable routes for processing recovered rare earth metals



Alternatives

Novel materials for high-performance magnets, substitution for high-performance magnets



Programme structure



The CLIMATES team



Martyn
Cherrington



Sheena
Hindocha



Debra Jones



Matthew
Reeves



Megan
Phoenix



Steve Morris



Jonny Bunt



Aileen
Woodley



Bethany
Hughes

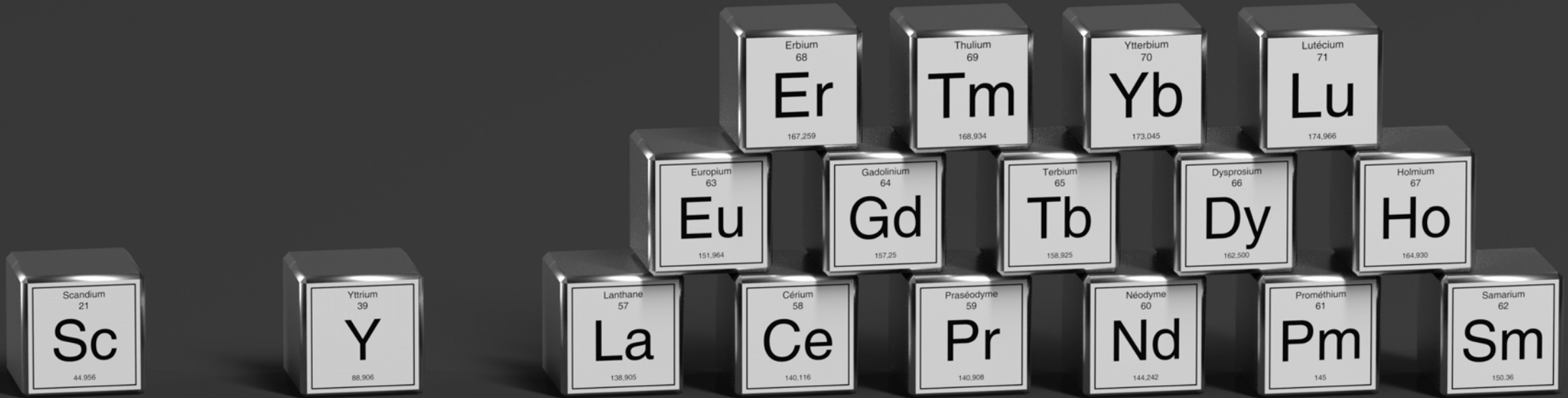


Ellie Collins

CLIMATES will:

- Grow **international collaborations** and bilateral projects with allied nations
- Improve business and public **awareness** of the importance of rare earth's
- Draw together the community to deliver industrial, and policy focused **standards**
- Unlock **private investment** from the City of London, and other financial centres, to grow this sector
- Deliver a **resilient supply chain** underpinned by the “**Global Britain**” vision
- Address the **skills** gap for critical materials
- Fund a **portfolio of projects** across the whole supply chain





Critical materials for magnets

Competition scope

Introduction & aims

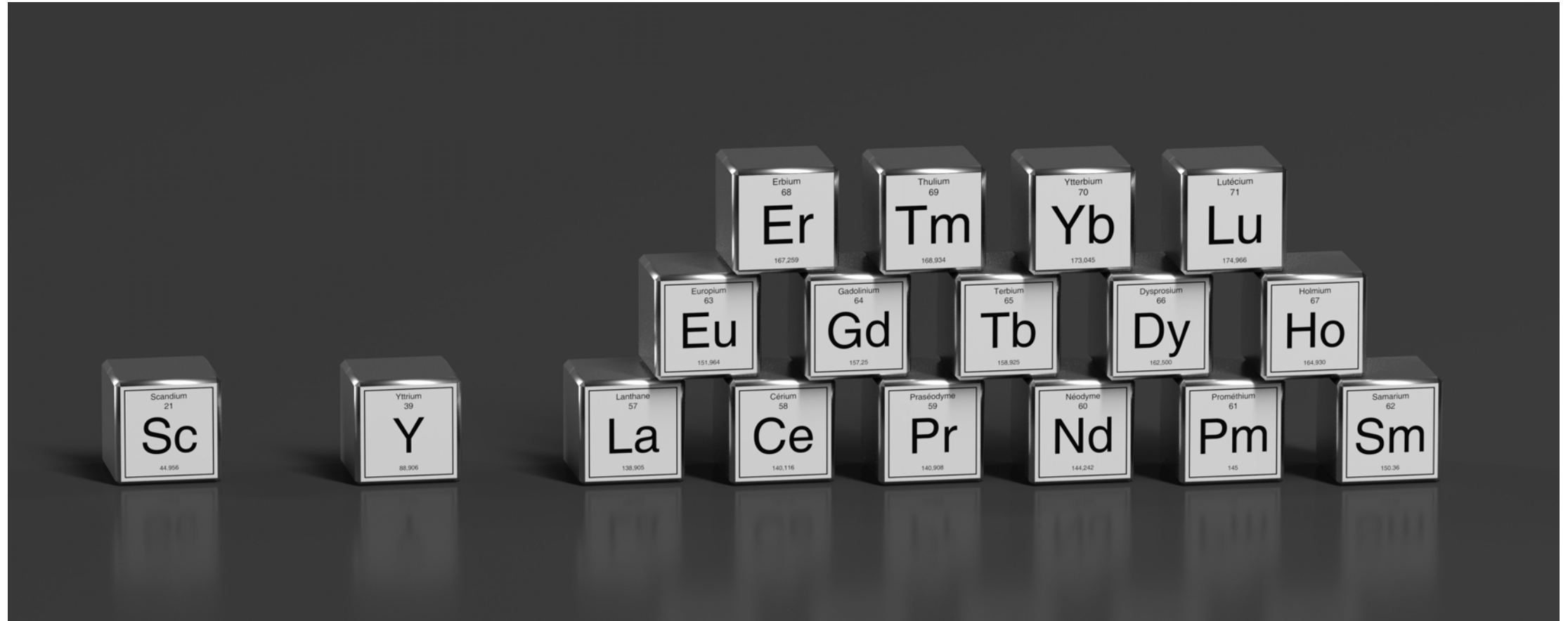
- As part of the CLIMATES programme, Innovate UK will invest up to **£5 million** in innovation projects
- The aim of this competition is to **stimulate growth** in a circular critical materials supply chain for **high performance magnets**
- Collaborative innovation projects will address opportunities across the **whole value chain** and increase **supply chain resilience**

Competition Structure

- This *critical materials for magnets* competition is split into 2 strands:
 - Strand 1: **early-stage feasibility studies** that will enable the adoption of new innovations in processes or technologies by industry that enable a more resilient UK supply chain for rare earth elements (REE)
 - Strand 2: **mid and late-stage R&D projects** that accelerate the industrialisation and commercialisation of innovative processes and technologies that enable a more resilient UK supply chain for REE

Scope: Rare earth elements only

15 lanthanides + Scandium & Yttrium



Scope

- Your project can cover one, or more, of the following areas:
 - Up-stream
 - Mid-stream
 - Down-stream
 - Circular supply chains
 - New and alternative materials
- Please note that the following detail is not exhaustive
- *If in doubt, contact:* support@iuk.ukri.org

Scope: Areas of interest (i)

Mining and up-stream

- development of sustainable mining processes for extracting REE from minerals. This includes the up-stream processes of leaching, separation and concentration of mixed REOs.
- processes that address management or valorisation of radioactive by-products

Mid-stream

- development of novel, sustainable mid-stream processing routes to REE metals
- increased efficiency or productivity improvements for mid-stream processing to REE metals
- development of novel, sustainable manufacturing routes to REE alloys

Scope: Areas of interest (ii)

Down-stream and magnet manufacture

- development of novel, sustainable manufacturing routes to REE magnets
- increased efficiency or productivity improvements for magnet manufacturing
- sustainable routes integrating materials from primary and secondary material feedstocks
- increased technical properties and performance of magnets
- decreased scrap production in magnet manufacturing

New and alternative materials

- development of novel materials for high-performance magnets
- substitution of materials for high-performance magnets
- cross-disciplinary mine to magnet approaches for materials identification

Scope: Areas of interest (iii)

Circular supply chains

- identification, collection, sorting, separation, dismantling REE containing final end-of-life products
- circular design of products containing high performance magnets
- safe and economic removal of high-performance magnets from final end-of-life products
- novel and sustainable routes for processing of recovered REE materials
- valorisation of scrap material produced during magnet manufacture
- environmental, societal, governance solutions for the provenance of REE materials for instance, sustainability models for life cycle analysis, measuring and accounting for embedded carbon, radioactivity and other environmental and societal impacts

Out of scope

We are not funding projects:

- ⊗ that do not focus on the materials supply chain, either primary or secondary
- ⊗ designing new magnet-free electric motors
- ⊗ that are developing existing non-magnet products
- ⊗ not focused on REE or a materials substitution
- ⊗ not being primarily exploited in the UK
- ⊗ addressing extending the life of magnet containing products

We cannot fund projects that are:

- dependent on export performance
- dependent on domestic inputs usage

Business Leadership and Collaboration

- All projects must:
 - be led by a UK registered business
 - collaborate with at least one other UK registered organisation
- International partners are allowed but are not eligible to receive grant funding

Cost, duration & project type

Strand 1, feasibility studies

Total costs: up to £500,000
Start on: 1 October 2023
Duration: up to 12 months
Maturity: Low
Project type: Feasibility study

Research organisations can share up to a maximum of **50%** of the total project costs

Strand 2, mid and late-stage R&D

Total costs: up to £1,000,000
Start on: 1 October 2023
Duration: up to 18 months
Maturity: Medium / High
Project type: Industrial research /
Experimental development

Research organisations can share up to a maximum of **30%** of the total project costs

Key dates

- Competition opens: 11th April 2023
- Competition closes: 21st June 2023, **11am**
- Notifications sent: 21st July 2023
- Projects commence: 1st October 2023

Summary

- Businesses can apply for a share of £5M for innovative projects to stimulate growth in the critical materials supply chain for magnets
- 2 strands:
 - Strand 1: [Feasibility studies](#)
 - Strand 2: [Mid- and late-stage R&D](#)

Eligibility	Strand 1	Strand 2
Total Project Costs	up to £500,000	up to £1,000,000
Duration	up to 12 months	Up to 18 months
Business-led	Yes	Yes
Collaborative	Yes	Yes
Project type(s)	Feasibility study	Industrial research or experimental development

Scope:

- Up-stream processes
- Mid-stream processes
- Down-stream, magnet manufacturing
- Circular supply chains
- Alternative materials

Key dates:

- 5th April - Briefing webinar
- 11th April – Opens
- 21st June, 11am – Closes
- 21st July – Notifications
- 1st October – Projects start



Innovate
UK

Thank you



@InnovateUK



Innovate UK



Innovate UK



@weareinnovateuk



Eligibility criteria



Innovate
UK



Previously submitted applications

This competition **does** allow you to submit a previously submitted application.

Previously submitted application	Not a Previously submitted application
A previously submitted application is an application Innovate UK judges as <u>not</u> materially different from one you have submitted before (but it can be updated based on the assessors' feedback)	<p>A brand-new application, project or idea that you have not previously submitted into an Innovate UK competition</p> <p>OR</p> <p>A previously submitted or ineligible application which:</p> <ul style="list-style-type: none">✓ has been updated based on assessor feedback✓ <u>and</u> is materially different from the application submitted before✓ <u>and</u> fits with the scope of this competition

Eligibility criteria

Project eligibility	<ul style="list-style-type: none">• lead must be a UK registered business• must be collaborative• must carry out your project in the UK• exploit the results from or in the UK
Total project costs	Feasibility studies Strand 1– up to £500,000 Industrial research and Experimental development Strand 2 – up to £1million
Project length	Feasibility studies Strand 1 – last up to 12 months Industrial research and Experimental development Strand 2 – last up to 18 months

Types of organisations we fund

- Business – Small or Micro, Medium or Large registered in the UK
- Research Organisation (RO):
 - Universities (HEIs)
 - Not for profit distributing Research & Technology Organisation (RTO) including Catapults
 - Public Sector Research Establishments (PSRE)
 - Research Council Institutes (RCI)
- Public sector organisations and charities doing research activity

If you are 100% owned by a large parent company as a small subsidiary this means you are classed as a large company and will only be entitled to the relevant grant. For more information on company sizes, please refer to the [company accounts guidance](#).

Compliance with the UK Subsidy Control Regime

On 1 January 2021, the UK left the EU and is no longer subject to EU laws on State aid. We draw your attention to the guidance issued by BEIS: [Complying with the UK's international obligations on subsidy control: guidance for public authorities](#). Please be aware this is a living document and may be updated by BEIS as time progresses.

The set rules (typically GBER) which we previously relied on for the limits of what we could award, have now been replaced by internal decisions based on the new BEIS Subsidy Control Regime, and on policy, which will in turn set out bespoke eligibility requirements for each funding opportunity.

Innovate UK is offering funding for this competition in line with the UK's obligations and commitments to Subsidy Control. To ensure that Innovate UK remains compliant with the UK's international Subsidy Control duties in respect of:

- the EU-UK Trade and Cooperation Agreement;
- Article 10 of the Northern Ireland Protocol (successful applicants which are affected by the Northern Ireland Protocol will be funded in line with EU State aid regulations)
- Article 138 of the Withdrawal Agreement (some Union law applicable after 31 December 2020 in relation to the UK's participation in Union programmes and activities)
- the Subsidies and Countervailing measures within the WTO (ASCM)
- any other Free Trade Agreements active at the time of award

All awards will be conditional on compliance at all times with the UK's International obligations on Subsidy Control - this will be reflected in the terms and conditions of any award.

Due diligence for UK Subsidy Control Regime

Under the Subsidy Control Regime, we will carry out financial health checks and ongoing concern assurances on your organisation.

Certify you are eligible

When submitting an application, you must certify that you are eligible for funding. If you are unsure, please take independent legal advice before applying. Should you be successful, we will complete these financial checks and assurances before confirming the grant offer.

- For more information on company sizes, please refer to the [Company accounts guidance](#).
- Further information is available on our website in the general guidance.

Eligibility Criteria - EU State Aid Regulations – Northern Ireland Protocol

If you are an applicant who is conducting activities that will affect trade of goods and/or electricity between Northern Ireland and the EU as envisaged by [Article 10 of the Northern Ireland protocol](#), then you must apply under European Commission State aid rules.

Undertaking in Difficulty

For applicants subject to the European Commission State aid rules, you will be required to prove that they were not an “Undertaking in Difficulty” (UiD). We will ask for evidence of this.

This test applies to:

- companies that are more than 3 years old
- companies where more than half of its subscribed share capital has disappeared as a result of accumulated losses.
- your parent or holding company

Certify you are eligible

When submitting an application, you must certify that you are eligible for State aid. If you are unsure, please take legal advice before applying. Should you be successful, we will apply this test as part of our viability checks before confirming the grant offer.

Further information is available on our website in the [general guidance under state aid](#).

If you are applying for an award funded under State aid Regulations, the definitions for company size are set out in the [European Commission Recommendation](#) of 6 May 2003.

Eligibility Criteria: Funding Opportunities

Funding for R&D projects split in to **3** categories; **feasibility studies**, **industrial research** and **experimental development**.

For feasibility studies and industrial research projects, you could get funding for your eligible project costs of:

- up to 70% if you are a micro or small organisation
- up to 60% if you are a medium-sized organisation
- up to 50% if you are a large organisation

For experimental development projects which are nearer to market, you could get funding for your eligible project costs of:

- up to 45% if you are a micro or small organisation
- up to 35% if you are a medium-sized organisation
- up to 25% if you are a large organisation

For research organisations conducting fundamental research you could get funding for your eligible project costs of up to 100%.

For general guidance on what our research categories are please visit:

<https://www.ukri.org/councils/innovate-uk/guidance-for-applicants/general-guidance/categories-of-research-and-development/#contents-list>

Participation Rules

The aim of this funding opportunity is to:

- optimise the level of funding to business and
- recognise the importance of research base to project

At least **70%** of total eligible project costs must be incurred by business.

The maximum level (**50%** or **30%** of total eligible project costs) is shared by all research organisations collaborating on the project.

What is collaboration?

In all collaborative projects there must be:

- at least two organisations claiming grant within the application (including the lead)
- a business or RTO-led consortium, which may involve both business and the research base
- evidence of effective collaboration

We would expect to see the structure and rationale of the collaboration described in the application.

Making more than one application

Any one business may be involved in up to 6 applications across both strands of these competitions, but can only be the lead partner in a maximum of 3 application across both strands of these competitions.

The lead and at least one other organisation must apply for funding when entering their costs into the application.

A research & technology organisation can be a partner in any number of applications.

Successful applicants will be asked to confirm they have the capacity to run multiple projects simultaneously.

Other Innovate UK projects

If you have an outstanding final claim or Independent Accountant Report (IAR) on a live Innovate UK project, you will not be eligible to apply to this competition, as a lead or a partner organisation.

We will not award you any further funding if you:

- applied to a previous competition as the lead or sole company and were awarded funding by Innovate UK, but did not make a substantial effort to exploit that award
- applied to a previous competition as the lead or sole company and failed to comply with grant terms and conditions.

Key Dates

Timeline	Dates
Competition Opens	11 April 2023
Briefing Event	5 April 2023
Submission Deadline	21 June 2023, 11:00
Applicants informed	21 July 2023



Innovation Funding Service (IFS)

Search for a funding competition and review criteria

Innovation competitions

Browse upcoming and live competitions. Find out when new competitions are launched by [signing up for competition updates](#).

Filter competitions

13 competitions

Keywords

Innovation area

Any

Update results

SBRI: Innovation in cycling and walking

Organisations can apply for a share of up to £470,000 for innovative proposals that encourage more journeys by bicycle or on foot.

Eligibility:

To lead a project you must:

- be an individual, business, group or organisation

Accelerating innovation in rail 5

Businesses can apply for a share of £7.9 million for innovations to minimise disruption to train services and to develop initiatives for intelligent trains.

Eligibility:

To lead a project you can be a business of any size, and you must:

- be based in the UK
- carry out your project in the UK
- involve at least one small or medium-sized enterprise (SME)
- work collaboratively

Opening soon

Opens: 18 September 2017

Closes: 15 November 2017

Accelerating innovation in rail 5

Businesses can apply for a share of £7.9 million for innovations to minimise disruption to train services and to develop initiatives for intelligent trains.

Competition opens: Monday 18 September 2017

Competition closes: Wednesday 15 November 2017 12:00pm

⚠ This competition has not yet opened.

Start new application

Summary **Eligibility** Scope Dates How to apply Supporting information

Description

Innovate UK, on behalf of the Department for Transport, will invest up to £7.9 million to support innovation and growth in national and international rail markets. This is a joint initiative with the rail industry, under the direction of its Technical Leadership Group, the team responsible for creating a vision for the future of the railways.

The aim of this competition is to create innovations that address the main goals identified in the industry's 'Rail Technical Strategy Capability Delivery Plan' 2017. These are:

- 'minimal disruption to train services'
- 'intelligent trains'

Projects should last between 6 months and 2 years. If your proposed project falls outside of the project funding range or duration, please [contact Innovate UK](#) before you apply.

Lead Applicant: create an account

The lead applicant must create an account:

UK registered businesses

Use Companies House lookup as it speeds up our checks by providing your company number. You are unable to enter this at a later date.

Research organisations, academics and universities

Enter your information manually so you are not listed as a business on IFS and ensure you receive the correct funding.



GOV.UK Innovation Funding Service

BETA This is a new service – your [feedback](#) will help us to improve it.

[Back](#)

Create your account

Your organisation

Your organisation must be UK based to receive funding from Innovate UK

Business

Find your organisation on Companies House

Enter your organisation name or registration number

Companies House search results

Select your organisation from the options below

[NOMENSA LTD](#)
04214477 - Incorporated on 10 May 2001
13 Queen Square, Bristol, BS1 4NT

GOV.UK Innovation Funding Service

BETA This is a new service – your [feedback](#) will help us to improve it.

[Back](#)

Please sign in or create an account

Used this service before?

Please sign into your Innovation Funding Service account.

New to this service?

If you haven't used the new Innovation Funding Service before you will need to create an account.

Innovation Funding Service Sign in

Email address
Please enter your email address.

Password
Please enter your password.

▼ [Need help signing in or creating an account?](#)

My email and/or password isn't working

If you applied previously using the old service, you will need to create a new account.

[Forgotten your password?](#)

Project Details

- **Application Team** - Collaborators can invite organisations who you are working with on the project. Contributors can invite colleagues from your own organisation to help you complete your application. All team members and Lead applicants must complete the Equality, Diversity and Inclusion survey embedded in IFS as part of your application.
- **Application Details** - Title, timescales, research category, innovation area and previously submitted application (y/n)
- **Subsidy basis** - Will the project, including any related activities, you want Innovate UK to fund, affect trade between Northern Ireland and the EU? All participants must complete this section.
- **Project Summary** - Short summary and objectives of the project including what is innovative about it
- **Public Description** - Description of your project which will be published if you are successful
- **Scope - How does your project align with the scope of this competition?** - If your project is not in scope, it will be ineligible for funding

Application Questions

Detailed guidance available on IFS

Application Form		Appendix?
Question 1	Applicant location (not scored)	No
Question 2	Need or challenge	No
Question 3	Approach and innovation	Yes - optional
Question 4	Team and resources	Yes - optional
Question 5	Market awareness	No
Question 6	Outcomes and route to market	No
Question 7	Wider impacts	No
Question 8	Project management	Yes - mandatory
Question 9	Risks	Yes - mandatory
Question 10	Added value	No
Question 11	Costs and value for money	No

Application finances



Innovate
UK



To claim funding

Your business does not have to be UK registered with Companies House when you apply but it must be registered before you can receive funding.

You are unable to claim funding if:

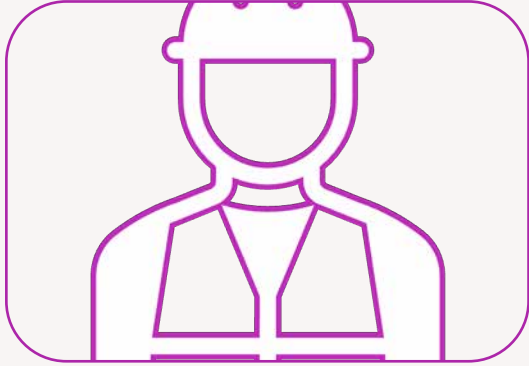
- you are an overseas organisation, so your company number begins with FC
- your organisation is setup as a branch, so your company number begins with BR
- you are a collaboration with no formal structure of ownership or control, so your company number begins with ML
- you are a Crown Dependency:
 - if your company is based in Jersey, your company number begins with JE
 - if your company is based in Guernsey
 - if your company is based in the Isle of Man

British Overseas Territories

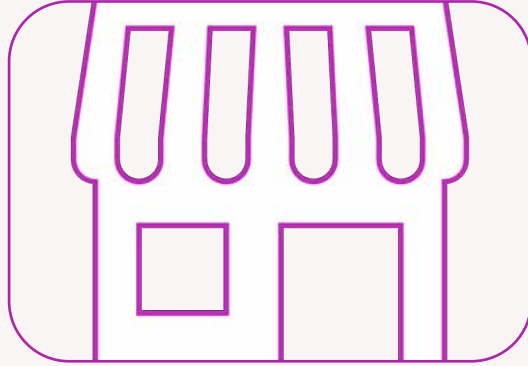
You are also unable to claim funding if your company is based in any of the British Overseas Territories (BOTs):

- Anguilla
- Bermuda
- British Antarctic Territory
- British Indian Ocean Territory
- British Virgin Islands
- Cayman Islands
- Falkland Islands
- Gibraltar
- Montserrat
- Pitcairn Islands
- Saint Helena, Ascension and Tristan da Cunha
- South Georgia and the South Sandwich Islands
- Turks and Caicos Islands

Your Project Cost Categories



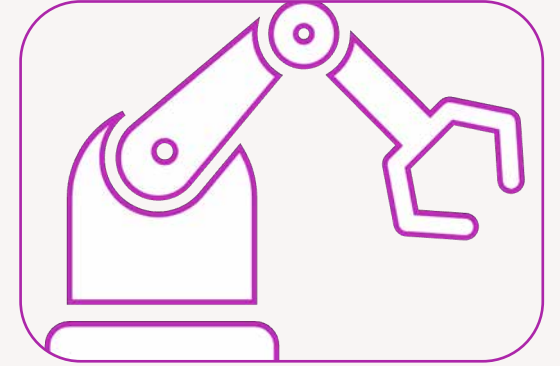
Labour



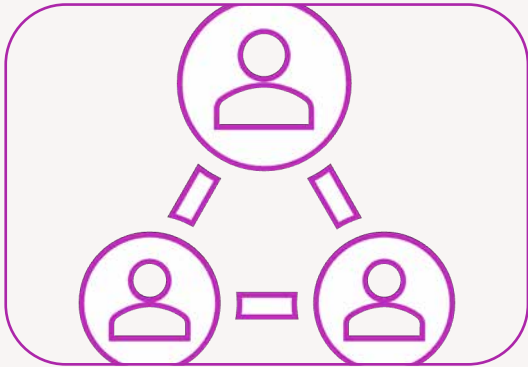
Overheads



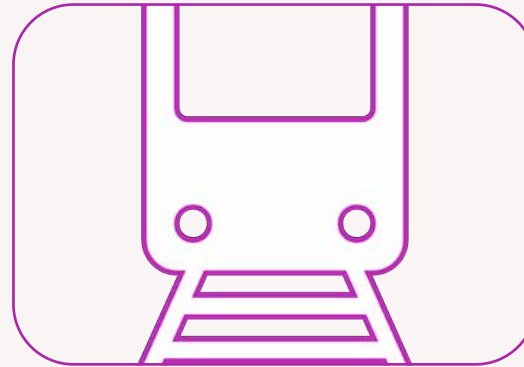
Materials



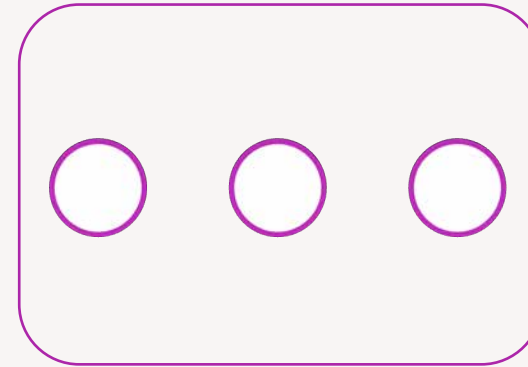
Equipment
Usage



Subcontractors



Travel &
Subsistence



Other

Labour

Costs supported:

- Roles and number of days spent working on project(time sheets required)
- 262 work days per annum(less Public holidays and entitlement)
- paid by PAYE
- Employers NI, annual salaries, pension, Health insurance

Costs not supported:

- Dividends & bonuses
- Holiday(excluding that mentioned in eligible costs)
- Training days
- Names not roles assigned to project costs

Labour

£25,862 —

You can claim the labour costs of all employees you have working on your project.

► [Labour costs guidance](#)

If your application is awarded funding, you will need to account for all your labour costs as they occur. For example, you should keep timesheets and payroll records. These should show the actual hours worked by individuals and paid by the organisation.

Working days per year

Number of staff and roles within the project

Role within project	Gross employee cost	Rate (£/day)	Days to be spent by all staff at this grade	Total costs	
<input type="text" value="Project Manager"/>	<input type="text" value="50000"/>	£216	<input type="text" value="120"/>	£25,862	Remove
<input type="text"/>	<input type="text" value="0"/>	£0	<input type="text" value="0"/>	£0	Remove

[Add another role](#)

Total labour costs **£25,862**

Material costs

Costs supported

Off the shelf items via 3rd Party suppliers

Items from stock with the replacement of items invoice (used as evidence of supply)

Costs not supported

Whole bulk buy invoices, when only partially used with project work

Items from stock that aren't being replaced

Equipment treated as assets

Materials£10,000 —

You can claim the costs of materials used on your project providing:

- they are not already purchased or included in the overheads
- they are purchased from third parties
- they won't have a residual/resale value at the end of your project. If they do you can claim the costs minus this value

[Please refer to our guide to project costs for further information.](#)

► [Materials costs guidance](#)

Please provide a breakdown of the materials you expect to use during the project

Item	Quantity	Cost per item (£)	Total	
<input type="text" value="Software"/>	<input type="text" value="1"/>	<input type="text" value="10000"/>	£10,000	Remove
<input type="text"/>	<input type="text" value="0"/>	<input type="text" value="0"/>	£0	Remove

[Add another materials cost](#)

Total materials costs **£10,000**

Subcontractors*

Costs supported

Justification required if non-UK supplier chosen

Independent contractor via 3rd Party suppliers

Linked supplier must be charged at cost

Description of work covered

Costs not supported

Intercompany uplifts or profits

Overseas contractors, if UK contractor available-
without justification

You can subcontract work if you don't have the expertise in your project team. You can also subcontract if it is cheaper than developing your skills in-house.

► [Subcontracting costs guidance](#)

Please provide details of any work that you expect to subcontract for your project.

Subcontractor name

Robotics experts ltd

Country where the subcontractor will work

UK

Role of the subcontractor in the project and description of the work they'll do

facilitation and availability of robotics labs

Cost

36795

Travel and subsistence*

Costs supported

Rail, Car or Plane**

Mileage at HMRC rate

Hotel (Bed and Breakfast)

Reasonable food costs(overnight stay only)

Costs not supported

Fuel

First class travel

Entertaining or marketing

Visas

Unreasonable food costs(overnight stay only)

Travel and subsistence £ 3,000 ▲

You should include travel and subsistence costs that relate to this project.

Purpose of journey or description of subsistence cost	Number of times	Cost each (£)	Total (£)	
Travel to robotics labs for testing	12	100	£ 1,200	Remove
monthly project meetings	12	150	£ 1,800	Remove

[Add another travel cost](#)

Total travel & subsistence costs £ 3,000

Overheads

Innovate UK's included costs are those incurred as a direct result of the project

Costs supported

Additional costs for administrative staff
Day to Day Calculation for those people listed in the Labour Costs Table, multiplied by the numbers of days working on the project work.

Costs not supported

Excessive costs of Senior Managers only overseeing project activities
Business as usual day to day rates for Administration
Uplifts of any kind

Overhead costs

£ 44,483 ▲

You can incur overhead costs associated with those directly working on the project as well as indirect (administration) overheads. To be eligible both overhead categories need to be directly attributable to the project. The indirect overheads need to be additional as well as directly attributable. Note that there are certain cost categories/activities which are not eligible. To find out which costs are ineligible/eligible refer to our [project costs guidance](#).

► [Overheads costs guidance](#)

- ☐ No overhead costs
- ☒ 20% of labour costs
- ☐ Calculate overheads

Calculate overheads

If you feel your overheads are higher than 20% you may calculate a value using the Innovate UK model in the spreadsheet available below. The model shows you which types of indirect costs associated with your project you may claim. For support with this option, please contact our Customer Support Service on 01793 44 2700. Any value claimed under this model will be subject to a review. This will assess the appropriateness of your claim if your grant application is successful.



Download the overhead calculation spreadsheet

Download as an Excel document [overhead calculation spreadsheet.xlsx \(16KB\)](#)

Download as an Open Office document [overhead calculation spreadsheet.ods \(10KB\)](#)

Upload your completed spreadsheet

No file currently uploaded

+ Upload

Capital equipment usage*-

Costs supported:

Usage costs for the period of use
A justification if greater than expected
Depreciation charge is included

Costs not supported

Purchase price of equipment
Usage costs for the whole of the project period
if only used for part of the time
100% write down within the project timeline**
*Please provide your Fixed Asset Register
**If not applicable

Capital usage	£750 —
You can claim the usage costs of capital assets you will buy for, or use on, your project.	
▶ Capital usage guidance	
Please provide a breakdown of the capital items you will buy and/or use for the project.	
Item description	
<div>Laptop</div>	
New or existing item	
<input checked="" type="radio"/> New <input type="radio"/> Existing	
Depreciation period (months)	
<div>24</div>	
Net present value at the start of your project or the price you bought it for (£)	
<div>2000</div>	
Residual value at end of project (£)	
<div>500</div>	
Utilisation (%)	
<div>50</div>	
Net cost	
£750	

Other*

Costs supported

Facility usage**

Licence fees(or appropriate proportion)

Miscellaneous(not covered in other categories)

Quality certification***

Specific PPE

Dissemination costs

Patent filing costs (for SMEs only) limited to £7.5k

Costs not supported

Facility charge rates

Marketing

Trademark

Undefined mixed costs

Contribution in kind

Business as usual costs

*You will be required to provide invoices and basis of daily rates

**At daily or hourly cost

***Where required for sign off

Other costs£ 0 ▲

Please provide details of any project costs which cannot be covered by the other cost categories.

► [Other costs guidance](#)

Please note that legal or project audit and accountancy fees are not eligible and should not be included as an 'other cost'. Patent filing costs of new IP relating to the project are limited to £7,500 for SME applicants only. Please provide estimates of other costs that do not fit within any other cost headings.

Description and justification of the cost	Estimated cost (£)
<div></div>	<div>0</div>

[Add another cost](#)

Funding

Funding rules

The level of funding awarded will depend upon the type of organisation and the type of research being undertaken in the project

Funding is calculated by project participant

IFS will advise the maximum grant % you can request based upon your answers to:

- type and size of organisation
- research category defined by the lead applicant in the Application Details section of the application



Organisation or type of activity	Technical feasibility studies and industrial research	Experimental development
Business (economic activity)	Micro or Small – 70% Medium – 60% Large – 50%	Micro or Small – 45% Medium – 35% Large – 25%
Research organisation (non-economic activity)	Universities – 100% (80% of Full Economic Costs) Other research organisations can claim 100% of their project costs	Other research organisations must: <ul style="list-style-type: none"> • be non-profit distributing and • disseminate the project results and • explain in the application form how this will be done
Public Sector Organisation or Charity (non-economic activity)	100% of eligible costs	Must: <ul style="list-style-type: none"> • be performing research activity and • disseminate project results and explain in the application form how this will be done • ensure that the eligible costs <u>do not include work / costs already funded</u> from other public sector bodies
Research organisations (undertaking economic activities) Organisations receive funding related to the size of their organisation	Micro or Small – 70% Medium – 60% Large – 50%	Micro or Small – 45% Medium – 35% Large – 25%

Academic partners



Innovate
UK

Why Je-S?

We use the Research Councils' Joint Electronic Submission System (Je-S) to collect academic finances.

The Je-S system automates the collection of Full Economic Costs (FEC) based costs from academic partners and tells them exactly what numbers should be used in the application form for their costs.

Also to collect project finance details from non-HEIs (e.g. RTOs) that are claiming they are carrying out academic quality work and want to be funded on an FEC basis.

Using Je-S means that Innovate UK follows standard Research Council guidelines on funding universities and enables Research Councils to easily co-fund Innovate UK projects.

The Je-S system is completely separate from Innovate UK and we cannot advise on its usage.

Project costs – academic partners

Enter the TSB reference number here



Enter the TSB Contribution column figures from *your* J-eS output document into the project costs section of the application.

Upload the Je-S with council status form as a PDF at the bottom of the screen.

Any queries, contact Je-S Helpdesk (not Innovate UK)

- jeshelp@je-s.ukri.org
- 01793 444164

TSB reference

This number is found at the top of your Je-S form

My REF

Financial resources

Please enter the following costs from the summary of resources section on your Je-S form

Directly incurred	TSB Contribution (please refer to the TSB contribution column)
Staff	11
Travel & subsistence	22
Other costs	33
Subtotal	£ 66
Directly allocated	
Investigators	44
Estates Costs	55
Other costs	66
Subtotal	£ 165
Indirect costs	77
Exceptions	
Staff	88

Submitting your application



Innovate
UK



Checking your finances are complete

Finances Summary

The following organisations have not marked their finances as complete:

- EMPIRE LTD



[Return to the finances section to complete your finances](#)

This application cannot be submitted unless finances have been marked as complete by all partners.

		Total costs	% Grant	Funding sought	Other public sector funding	Contribution to project
Barry Shaw Experts Ltd Partner	✓	£230,162	70%	£161,113	£0	£69,049
EMPIRE LTD Lead organisation	⚠	£282,655	70%	£197,859	£0	£84,797
University of Bath Partner	✓	£239,114	0%	£0	£0	£239,114
Total		£751,931		£358,972	£0	£392,959

All organisations have marked their finances as complete.

Research organisation participation is no greater than **50% for strand 1** and **30% for strand 2** of the total project costs.

IFS DOES NOT VALIDATE TOTAL PROJECT COSTS

Editing a submitted application

test

Application number: 242
Competition: 599 Covid de minimis round 2

Awaiting assessment

Application submitted

[Reopen](#)

Reopen by clicking here

Terms and conditions

You must agree to these before you submit your application.

[Award terms and conditions](#) ✓ Complete

[Review and submit](#) [Print your application](#)

Remember to press
'Submit application'

Terms and conditions Open all

Award terms and conditions ✓ Complete +

[Submit application](#)

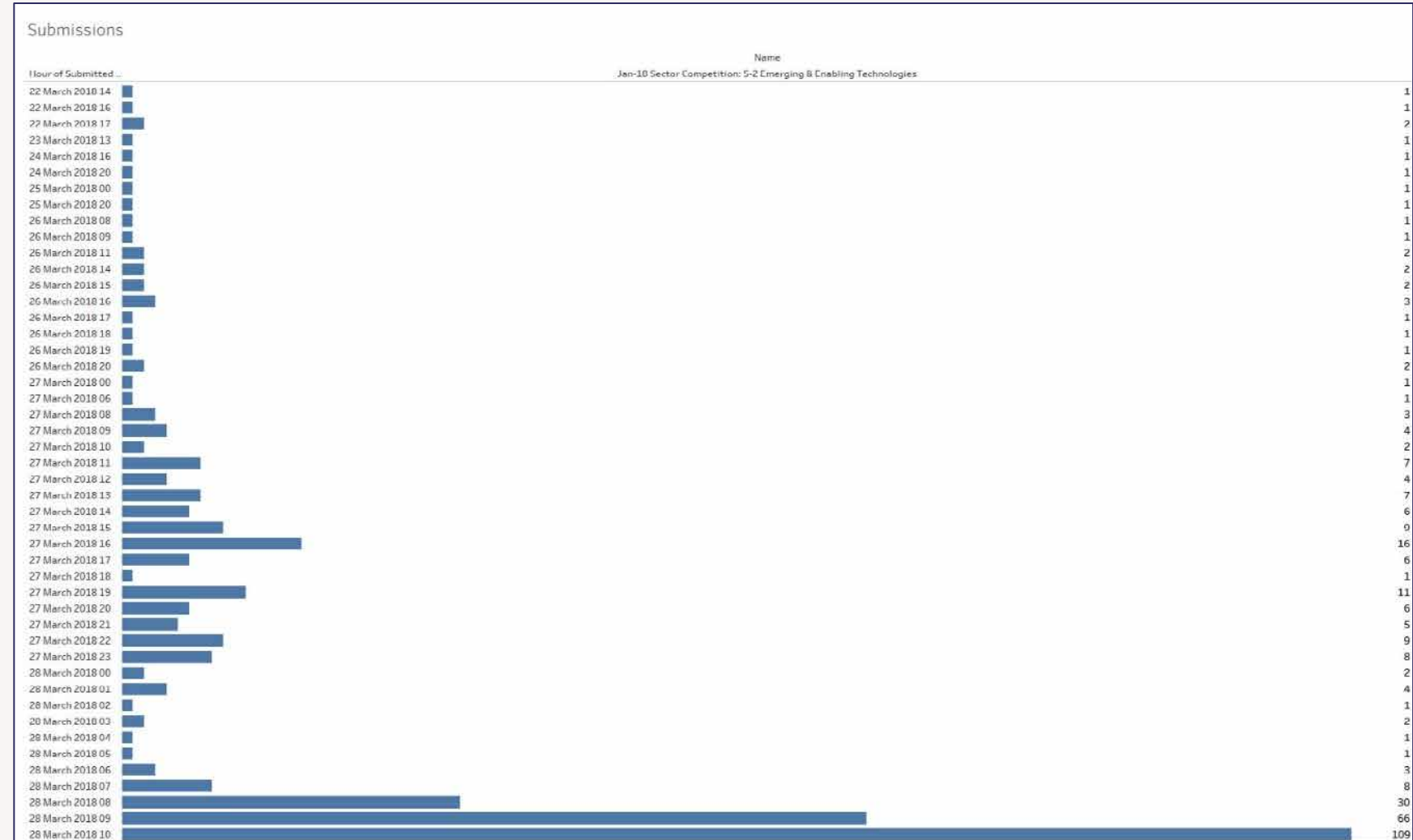
Need help with this service? [Contact us](#)

Submit your application early!

Customer Support can help resolve any issues you might have when submitting but only if they are contacted before the deadline. Once the deadline has passed, your application cannot be submitted.



Innovate
UK



Assessment



Innovate
UK



How do our assessors assess?

www.improvementuk.org

0300 301 4357



How are successful applications selected for funding?

www.international.org

1800 311 4457



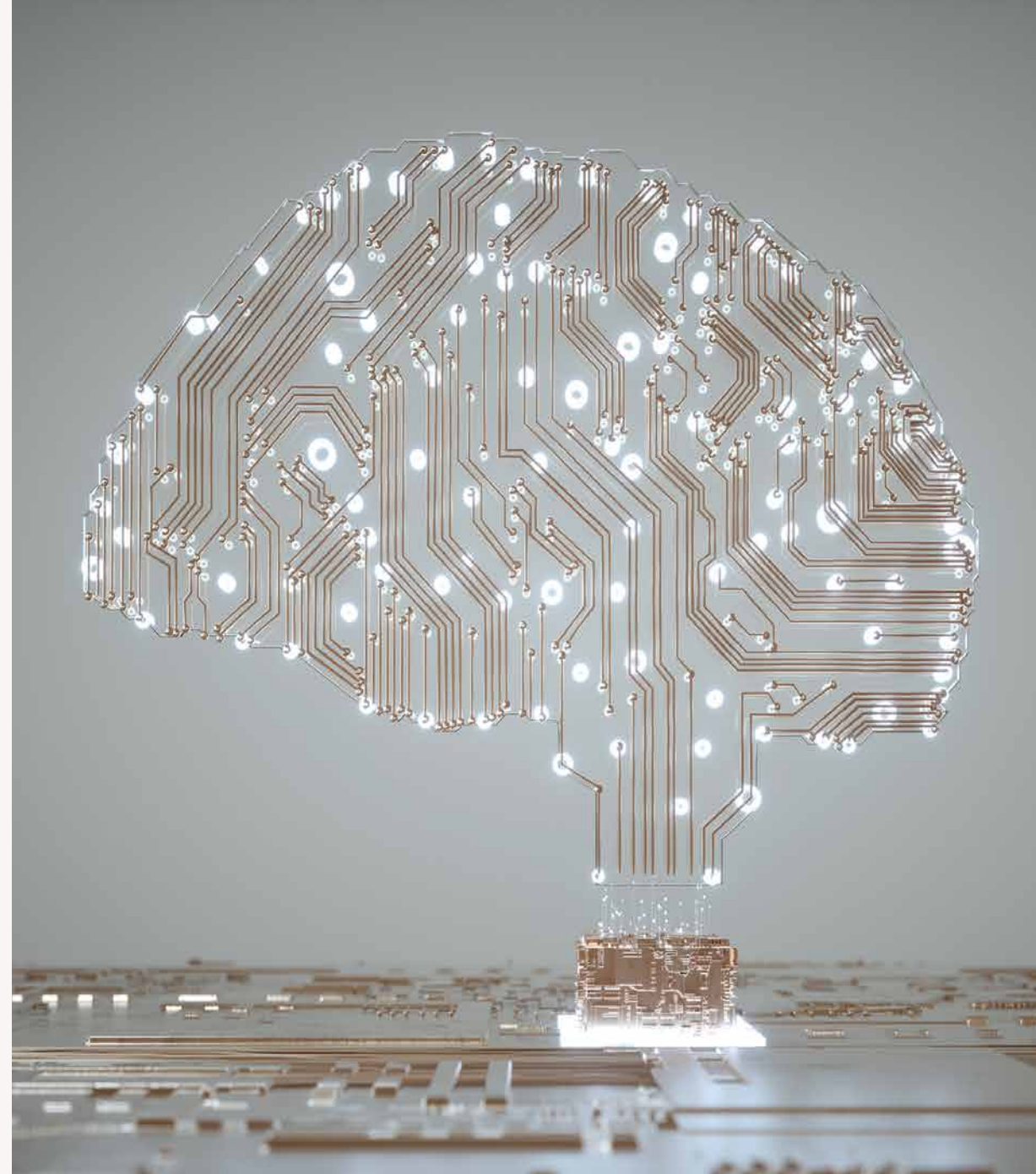
International
Development
Research Centre



Project setup for successful applicants



Innovate
UK



Notification

If you are unsuccessful in this competition

You can use the feedback from the assessors to develop your idea and apply into another competition that allows previously submitted applications

If you are successful in this competition

- you will be assigned a Delivery Executive who will guide you through the Project Set Up process
- you will have 7 days to complete the project team, project details and bank details
- you will then have **90** days to complete project set up – funding may be withdrawn if this is not completed within this timeframe

Please ensure all your contact details in the IFS portal are correct and up to date and that you regularly monitor it.

Project set up

- All communication will be through IFS.
- Lead applicant must provide collaboration agreements and exploitation plans if applicable.
- Any partners with individual total project costs of **up to** £50,000 must provide evidence with a Statement of Expenditure (SoE).
- Any partners with individual total project costs **above** £50,000 must provide evidence with an Independent Accountants Report (IAR).

Project delivery

- All grants are paid **quarterly** in arrears and are only paid following **quarterly** reporting and necessary audits.
- Claims can only be made for costs incurred and paid between the project start and end dates.
- Monitoring of the project includes a visit from the appointed Monitoring Officer.

Additional Support



Innovate
UK



Innovate UK EDGE

Bespoke growth and scaling support at the business end of innovation

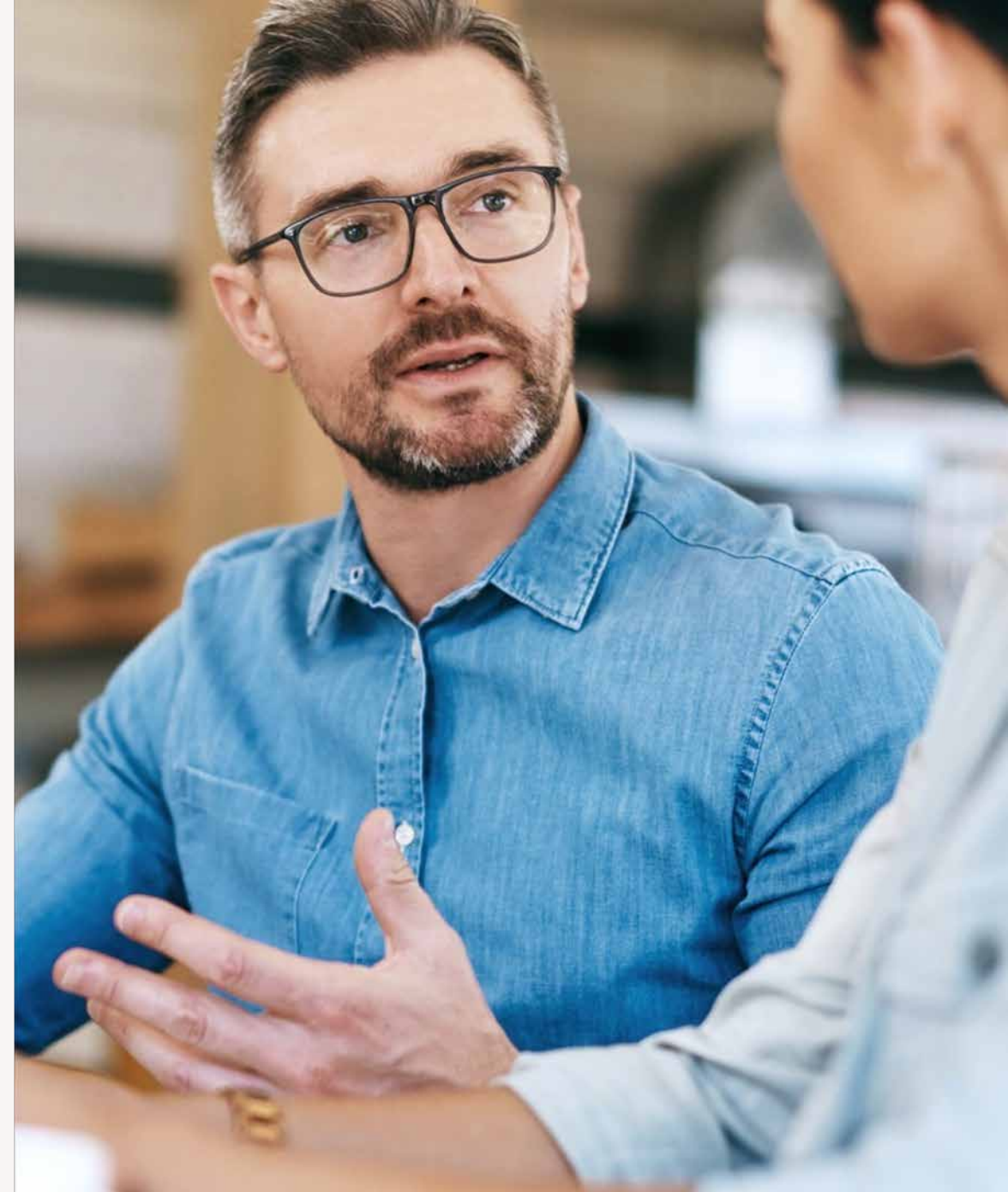
- Intensive growth and scaling support tailored to the needs of each of our ambitious innovation-driven clients
- Offered alongside project funding to Innovate UK award winners, most of whom engage us. We are also available to all high growth potential innovative small or medium-sized businesses*
- Engagement at early, growth and scaling stages, with our core high growth service and enhanced Scaleup Programme
- Delivered by 290 innovation and growth specialists embedded in regional ecosystems across the UK, including a board of expert scaleup directors

**subject to eligibility and currently in all nations and regions outside Scotland*

Innovate UK EDGE

An innovation and growth specialist, or scaleup directors, work with a company's leadership to hone its commercial strategy and help it take targeted action to, for example:

- Build investment readiness
- Manage innovation effectively
- Enter global markets
- Providing local to national to international growth and scaling support



Innovate UK EDGE



Equality, Diversity & Inclusion

- We are on a mission to embed Equality, Diversity, and Inclusion in everything we do, internally and externally.
- We believe that great ideas can, and do, come from anyone and everyone.
- We know that diversity and inclusion in businesses contributes to enhanced innovation, satisfaction, performance, and ultimately, commercial success.



Available Support

- We welcome and encourage applications from people of all backgrounds and are committed to making our application process accessible to everyone.
- This includes providing support for people who have a disability or long-term condition and face barriers applying to us.
- So, if you would like any support, please contact our Customer Support Service Team on support@iuk.ukri.org or at **0300 321 4357**.



What to Expect

1.

Contact our Customer Support Services Team as early as possible – we suggest at least 15 working days before the deadline

2.

Complete a request form which will be sent to our partner Diversity & Ability (D&A)

3.

D&A will conduct a Discovery Conversation with you and make reasonable adjustments recommendations

4.

D&A will organise and deliver bespoke reasonable adjustments for and with you

5.

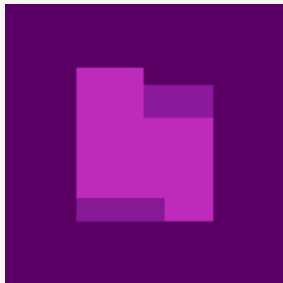
Submit your application – please do so well ahead of the deadline as extensions cannot be provided

Contact

Customer Support Services

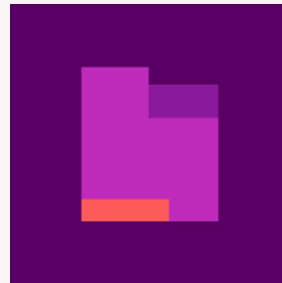
0300 321 4357 (Monday - Friday 9-5pm)

support@iuk.ukri.org



Innovate UK

ukri.org/councils/innovate-uk



Innovate UK KTN

ktn-uk.co.uk



Innovate UK EDGE

innovateukedge.ukri.org



Innovate
UK



Innovate
UK

Thank You



@InnovateUK



Innovate UK



Innovate UK

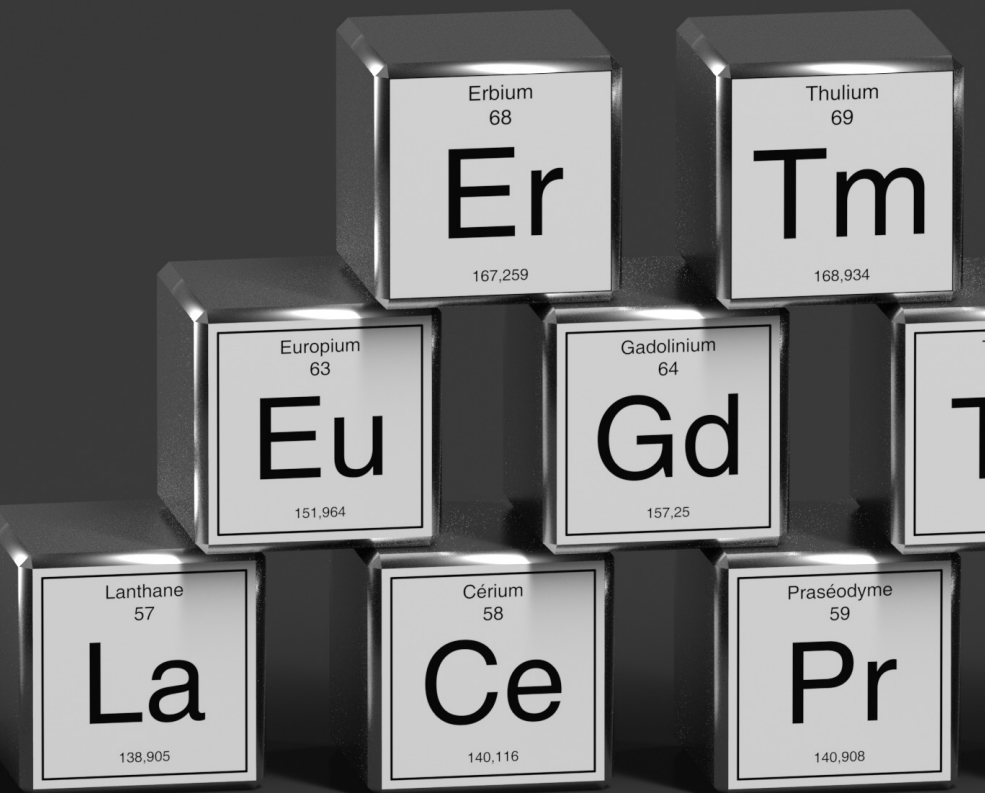


@weareinnovateuk



Q&A

Please use the Q&A box to ask questions



Call to Action

Sign up to CLIMATES mailing list

- Hear news about upcoming events, articles and activities
- <https://info.ktn-uk.org/p/2VFU-EJD/climates>

Build your consortia with Meeting Mojo

- Upload your profile, search other users' profiles to connect and network
- Online messaging and 1:1 virtual meetings
- <https://critical-climates.meeting-mojo.com/>

Connect with the team

- Connect to KTN experts to support your innovation development



Thank you

@KTNUK

www.ktn-uk.org



Innovate UK
KTN